



Verizon Deutschland GmbH

Message Guideline For Electronic Telecommunication Bill

Format:	EDIFACT
Message Type:	INVOIC
Message Status:	D
Message Release:	99B
Subset:	VETB
Subset Version:	1
Subset Release:	0
Document version:	1



Message Guideline For Electronic Telecommunication Bill

- 1. Introduction..... 6
- 2. Message Diagram..... 8
- 3. Used segments / groups and their frequency.....12
 - 3.1 Branching diagram 'HEADER SECTION'12
 - 3.2 Branching diagram 'DETAIL SECTION'14
 - 3.3 Branching diagram 'SUMMARY SECTION'15
- 4. Explanation of used segments and data elements.....16
 - 4.1 Header Section.....16
 - 4.1.1 Segment UNA – Delimiter 16
 - 4.1.2 Segment UNB – Sender- and recipient identification 17
 - 4.1.3 Segment UNH – Beginning of the CONTRACTOR – invoice 19
 - 4.1.4 Segment BGM - Typ, number and status of invoice.....21
 - 4.1.5 Segment DTM - Invoice date and period.....22
 - 4.1.6 Segment PAI – Payment instructions.....23
 - 4.1.7 Segment FTX – Free text24
 - 4.1.7.1 Segment FTX – Invoice Instruction/Invoice text23
 - 4.1.7.2 Segment FTX – Invoice language.....25
 - 4.1.8 Segment - Group 126
 - 4.1.8.1 Segment RFF – Numbers.....26
 - 4.1.9 Segment - Group 2.....28



4.1.9.1	Segment NAD – Addresses of the parties.....	28
4.1.9.2	Segment FII – Financial institution info of seller and invoicee ..	30
4.1.9.3	Segment - Group 3.....	31
4.1.9.3.1	Segment RFF – Number.....	31
4.1.9.4	Segment - Group 5.....	32
4.1.9.4.1	Segment CTA – Contact information.....	32
4.1.9.4.2	Segment COM – Telephone –/ telefax / E-Mail of sender.....	33
4.1.10	Segment - Group 6.....	34
4.1.10.1	Segment TAX – VAT relating to the whole invoice.....	34
4.1.11	Segment - Group 7.....	35
4.1.11.1	Segment CUX - Currency.....	35
4.1.12	Segment - Group 8.....	36
4.1.12.1	Segment PAT – Terms of payment.....	36
4.1.12.2	Segment DTM – Net due date.....	37
4.1.13	Segment - Group 16.....	38
4.1.13.1	Segment ALC – Discount rules.....	38
4.2.	Detail Section.....	39
4.2.1	Segment - Group 26.....	39
4.2.1.1	Segment LIN – Configuration levels.....	39
4.2.1.2	Segment IMD – Item description.....	41
4.2.1.3	Segment IMD – Line item description.....	43
4.2.1.4	Segment QTY - Quantity.....	44
4.2.1.5	Segment DTM - Date.....	45



4.2.1.6	Segment FTX – Additional free text	46
4.2.1.7	Segment - Group 27	47
4.2.1.7.1	Segment MOA – Monetary amount	47
4.2.1.8	Segment - Group 29	48
4.2.1.8.1	Segment PRI – Unit price	48
4.2.1.9	Segment - Group 30	49
4.2.1.9.1	Segment RFF – Numbers	49
4.2.1.9.2	Segment DTM - Date	51
4.2.1.10	Segment - Group 33	52
4.2.1.10.1	Segment - LOC - Location	52
4.2.1.11	Segment - Group 34	54
4.2.1.11.1	Segment TAX – VAT relating to line item	54
4.2.1.12	Segment - Group 35	56
4.2.1.12.1	Segment NAD – Different address info	56
4.2.1.12.1.1	Segment - Group 38	58
4.2.1.12.1.1.1	Segment CTA – Contact information	58
4.2.1.12.1.1.2	Segment COM – Telephone –/ telefaxnumber / E-Mail	59
4.2.1.13	Segment - Group 39	60
4.2.1.13.1	Segment ALC – Discount rules	60
4.2.1.13.1.1	Segment DTM – Date Information for Discount Rule	61
4.2.1.13.1.2	Segment - Group 40	62
4.2.1.13.1.2.1	Segment QTY – Discount of Units	62
4.2.1.13.1.2.2	Segment RNG – Range Details	63



4.2.1.13.1.3	Segment - Group 41	64
4.2.1.13.1.3.1	Segment PCD – Discount Based on Percentage	64
4.2.1.13.1.3.2	Segment RNG – Range Details	65
4.2.1.13.1.4	Segment - Group 42	66
4.2.1.13.1.4.1	Segment MOA – Monetary Amount Discount	66
4.2.1.13.1.4.2	Segment RNG – Range Details for Adjustments	67
4.3	Summary Section	68
4.3.1	Segment UNS – Section control	68
4.3.2	Segment - Group 50	69
4.3.2.1	Segment MOA – Monetary amount	69
4.3.3	Segment - Group 52	71
4.3.3.1	Segment TAX – Individual VAT rates of invoice	71
4.3.3.2	Segment MOA – Individual VAT amounts of invoice	73
4.3.4	Segment UNT	74
4.3.5	Segment UNZ	75



1. Introduction

The guideline for EDIFACT-Subsets includes the following sections:

- Graphical depiction of the message structure
- Overview used segments / segmentgroups and their frequency
- Explanation of the used segments and data elements
- Examples

The two diagrams of the graphical depiction and the graphical presentation include the segments and segmentgroups which form part of the subset.

For every segment and group the frequency and the status (M - Mandatory, C - Conditional) is stated, as agreed upon in message INVOIC as defined in directory 99B.

How often a segment occurs in the subset is described in the segment and element-definition.

In „Explanation of used segments and dataelements“ each segment with its elements is explained and displayed in an example.

The first column in the table "data element-no" lists the composite data elements-identification (Cnnn) or the data element-no (nnnn) according ISO-standard.

The second column shows the EDIFACT-description.

The third and forth column "Status" and "Format" show status and format of the elements. Status is encoded "M" for mandatory and "C" for conditional fields.



Segment

- A segment is an information-unit which is embedded in the message.
- A segment is the aggregation of logically connected data elements or composite data elements.
- Segments are always placed within a message according to the sequence defined in the branching diagram.
- A segment starts with a segment-tag (e.g. DTM) that identifies each segment and ends with an segment terminator (e.g. ').
- There are user data segments (e.g. DTM) and service segments (e.g. UNH, UNT).

Data elements

A data element is the smallest information unit in a segment. Two or more data elements can be combined in an composite data element. These data elements are called component data elements.

- Data elements, composite data elements and data elements within composite data elements are placed within a segment in a fixed sequency. They can be identified according to their position.
- Data elements and composite data elements can have the following status:
 - mandatory or
 - conditional

The presentation of the data format is based upon UNTDED (United Nations Trade Data Element Directory).

Examples of data formats:

a2	2 alphabetic characters, fixed length
n7	7 numeric characters, fixed length
an4	4 alphanumeric characters, fixed length
a..6	6 alphabetic characters, variable length
n..5	5 numeric characters, variable length
an..60	60 alphanumeric characters, variable length

(ISO-Standards ISO 7372 und ISO 9735).

Delimiters used in the UNA-segment separate segments, component data elements, data elements and composite data elements.

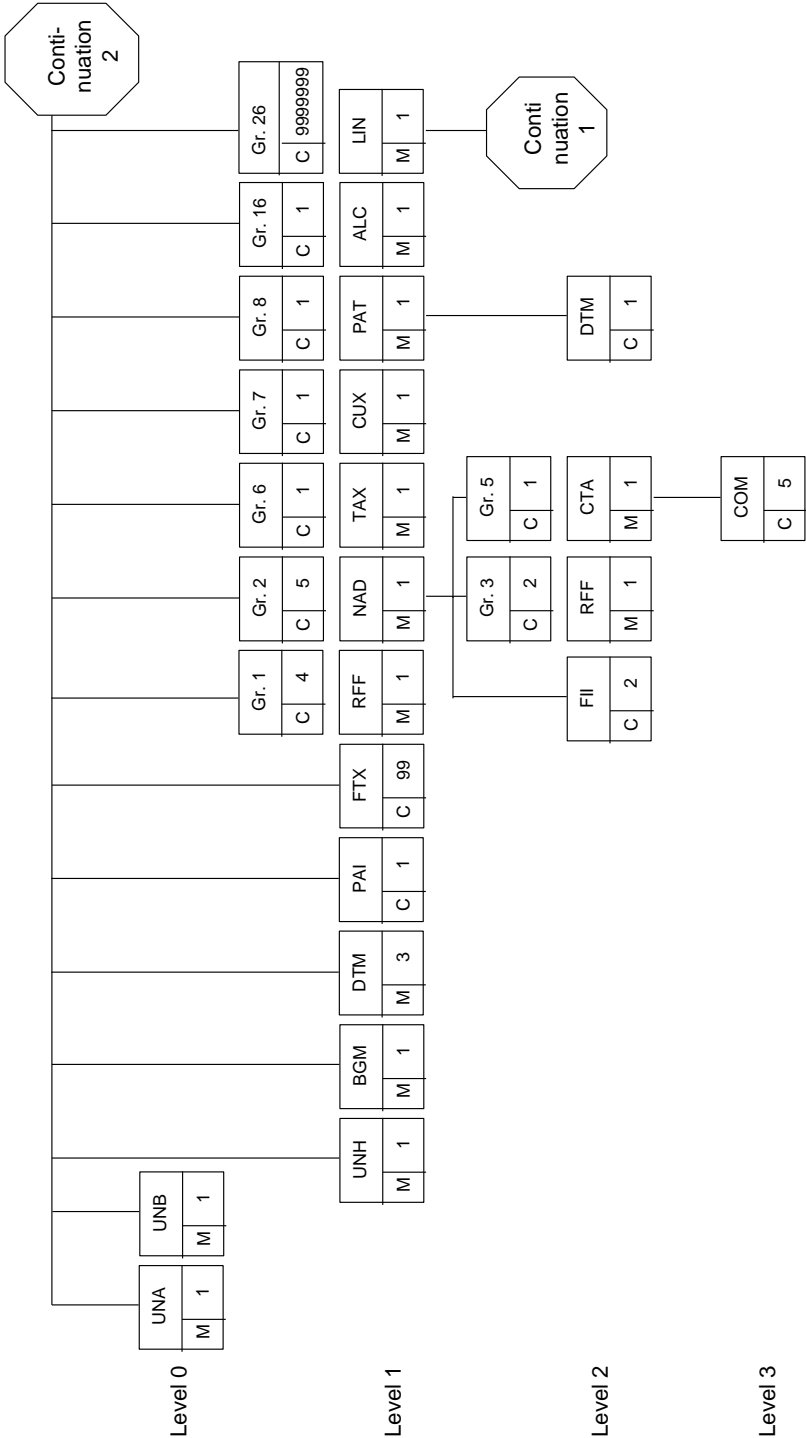


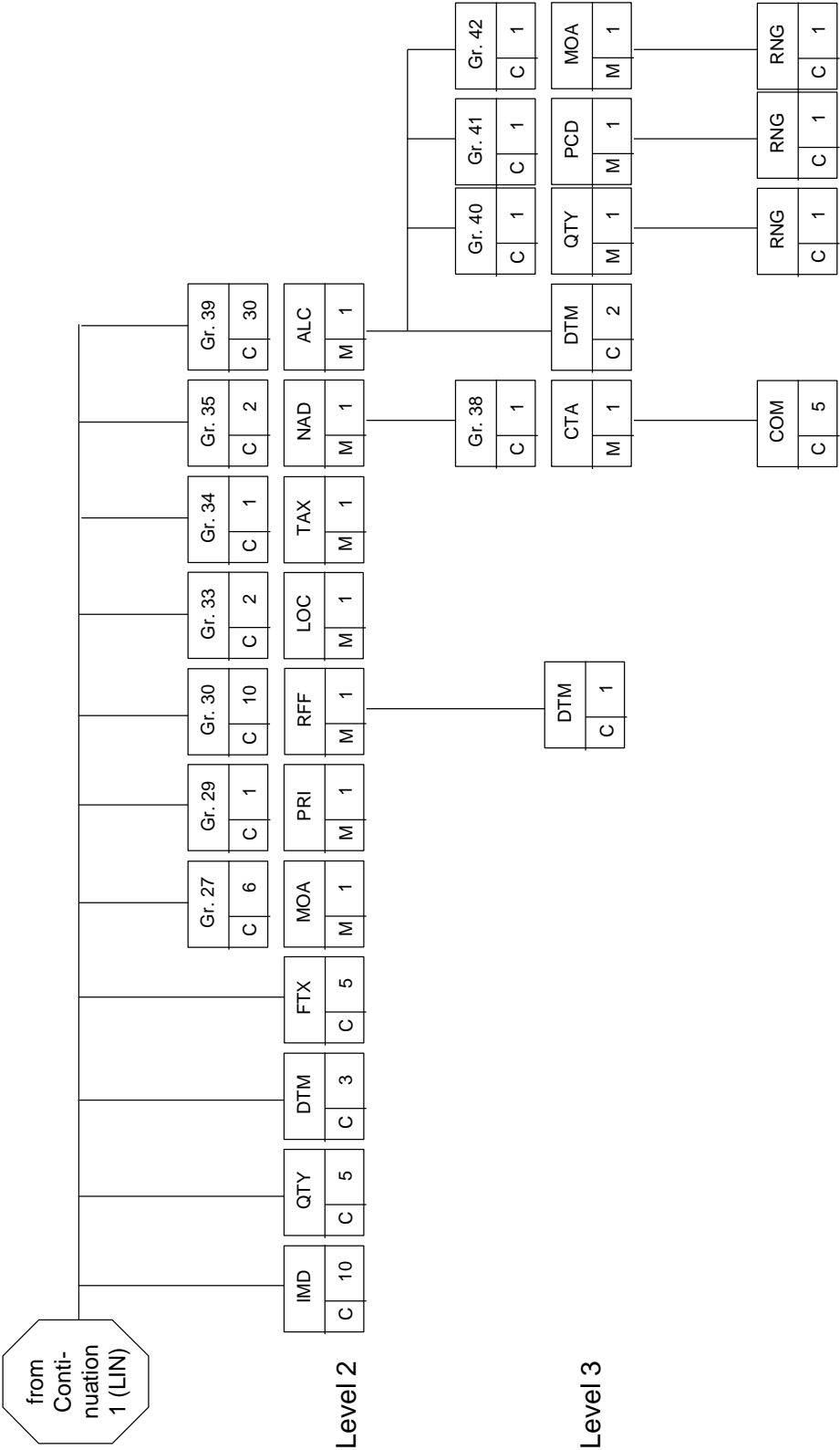
The fifth column „description/valid codes“ includes the used qualifiers or a verbal description of the use of this data element. If there are no entries in this column, the data element is not used in this subset.

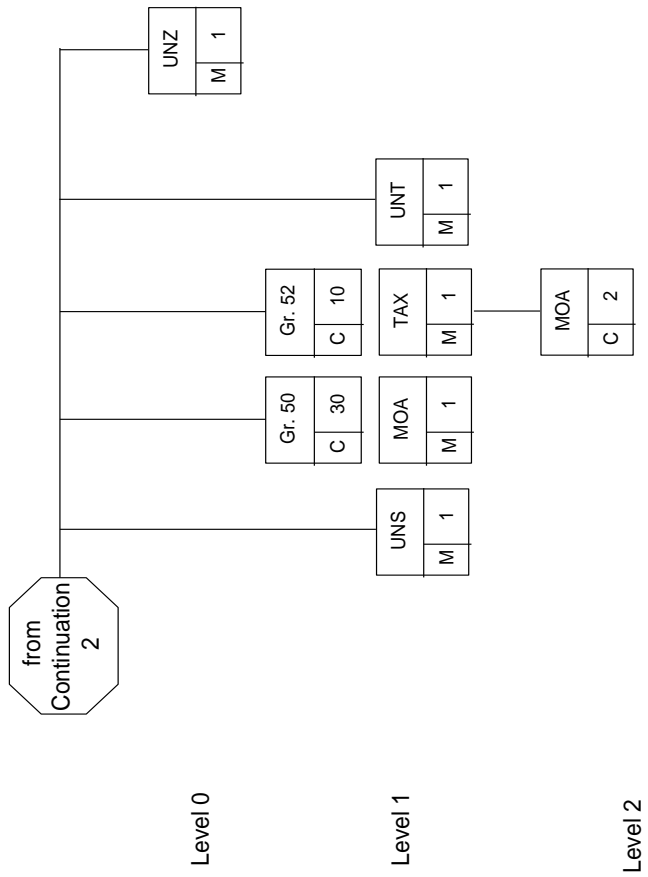
The diagrams describe both the electronic invoice and the electronic itemised bill in EDIFACT.



2. Message Diagram









3. Used segments / segment groups and their frequency

3.1 Branching diagram 'HEADER SECTION'

	Name	Status	Frequency	
UNA	Character Set Definition	M	1	
UNB	Interchange header	M	1	
UNH	Message header	M	1	
BGM	Beginning of message	M	1	
DTM	Date/time/period	M	3	
PAI	Payment instructions	C	1	
FTX	Free text	C	99	
	----- Segment group 1 -----	C	4	
RFF	Reference	M	1	
	----- Segment group 2 -----	C	5	
NAD	Name and address	M	1	
FII	Financial institution information	C	2	
	----- Segment group 3 -----	C	2	
RFF	Reference	M	1	
	----- Segment group 5 -----	C	1	
CTA	Contact information	M	1	
COM	Communication contact	C	5	
	----- Segment group 6 -----	C	1	
TAX	Duty/tax/fee details	M	1	
	----- Segment group 7 -----	C	1	
CUX	Currencies	M	1	



	----- Segment group 8 -----	C	1	
PAT	Payment terms basis	M	1	
DTM	Currencies	M	1	
	----- Segment group 16 -----	C	1	
ALC	Allowance or charge	M	1	



3.2 Branching diagram 'DETAIL SECTION'

	Name	Status	Frequency
	----- Segment group 26 -----	C	9999999
LIN	Line item	M	1
IMD	Item description	C	10
QTY	Quantity	C	5
DTM	Date/time/period	C	3
FTX	Free text	C	5
	----- Segment group 27 -----	C	5
MOA	Monetary amount	M	1
	----- Segment group 29 -----	C	1
PRI	Price details	M	1
	----- Segment group 30 -----	C	10
RFF	Reference	M	1
DTM	Date/time/period	C	3
	----- Segment group 33 -----	C	2
LOC	Place/location identification	C	1
	----- Segment group 34 -----	C	1
TAX	Duty/tax/fee details	M	1
	----- Segment group 35 -----	C	1
NAD	Name and address	M	1
	----- Segment group 38 -----	C	1
CTA	Contact information	M	1
COM	Communication contact	C	5
	----- Segment group 39 -----	C	30



ALC	Allowance or charge		M	1	
DTM	Date/time/period	C		2	
	----- Segment group 40 -----	C		1	
QTY	Quantity	M		1	
RNG	Range details	C		1	
	----- Segment group 41 -----	C		1	
PCD	Percentage details	M		1	
RNG	Range details	C		1	
	----- Segment group 42 -----	C		1	
MOA	Monetary amount	M		1	
RNG	Range details	C		1	

3.3 Branching diagram 'SUMMARY SECTION'

	Name	Status	Frequency
UNS	Section control	M	1
	----- Segment group 50 -----	M	30
MOA	Monetary	M	1
	----- Segment group 52 -----	C	10
TAX	Duty/tax/fee details	M	1
MOA	Monetary	C	2
UNT	Message trailer	M	1



4. Explanation of used segments and data elements

4.1 Header Section

4.1.1 Segment UNA - Delimiter

Message - Section: Header

Segment - Group:

Segment: UNA

Segment - Name: Delimiter

Description: Character Set Definition

DE-No	Description	Status	Format	description/valid codes
	COMPONENT DATA ELEMENT SEPARATOR	M	an1	':'
	DATA ELEMENT SEPARATOR	M	an1	'+'
	DECIMAL NOTATION	M	an1	','
	RELEASE INDICATOR	M	an1	'?'
	Will be placed in front of a character if the character is listed in the UNA-Segment but shall be displayed as free text.			
	REPETITION SEPARATOR	M	an1	''
	SEGMENT TERMINATOR	M	an1	''' (single quotation)

Example:

UNA:+.? '



4.1.2 Segment UNB – Sender- and recipient identification

Message - Section: Header

Segment - Group:

Segment: UNB

Segment - Name: Interchange header

Description:: Sender and recipient identification

DE-No	Description	Status	Format	description/ valid codes
S001	SYNTAX IDENTIFIER	M		
0001	Syntax identifier	M	an4	'UNOA'
0002	Syntax version number	M	n1	'1'
S002	INTERCHANGE SENDER	M		
0004	Sender identification	M	an..35	'VERIZON' (Should not be changed!)
0007	Identification code qualifier	C	an..4	
0008	Interchange sender internal identification	C	an..14	
0042	Interchange sender subinternal identification	C	an..35	
S003	INTERCHANGE RECIPIENT	M		
0010	Recipient identification	M	an..35	Code for recipient identification
0007	Identification code qualifier	C	an..4	
0014	Routing address	C	an..14	
S004	DATE/TIME OF PREPARATION	M		
0017	Date	M	N8	Creation date of the file (CCYYMMDD)
0019	Time	M	n4	Creation time of the file (HHMM)
0020	INTERCHANGE CONTROL REFERENCE	M	an..14	number of the transmission
S005	RECIPIENTS REFERENCE/ PASSWORD	C		
0022	Recipients reference password	M	an..14	
0025	Recipients reference password qualifier	C	an..2	
0026	APPLICATION REFERENCE	C	an..14	
0029	PROCESSING PRIORITY CODE	C	a1	
0031	ACKNOWLEDGEMENT REQUEST	C	n1	
0032	COMMUNICATIONS AGREEMENT	C	an..35	



	ID			
0035	TEST INDICATOR	C	n1	'1' for test message

S002.0004

The consecutive number of interchange of the sender / originator.

S003.0010

The agreed upon code for the recipient.

Example:

UNB+UNOA:1+VERIZON+1111111111+20091201:1605+5'



4.1.3 Segment UNH – Beginning of the CONTRACTOR - Invoice

Message - Section: Header

Segment - Group:

Segment: UNH

Segment - Name: Message header

Description: Beginning of the CONTRACTOR - Invoice

DE-Nr	Description	Status	Format	description/ valid codes
0062	MESSAGE REFERENCE NUMBER	M	an..35	Sequence number of the message within the interchange
S009	MESSAGE IDENTIFIER	M		
0065	Message type identifier	M	an..6	'INVOIC'
0052	Message type version number	M	an..6	'D'
0054	Message type release	M	an..3	'99B'
0051	Controlling agency	M	an..2	'UN'
0057	Association assigned code	C	an..6	
0051	Code list directory version number	C	an..6	
0057	Message type sb-function id	C	an..6	
0068	COMMON ACCESS REFERENCE	C	an..35	
S010	STATUS OF TRANSFER	C		
0070	Sequence of transfer	M	n..2	
0073	First and last transfer	C	an1	'C' first partial transfer 'F' last partial transfer
S016	MESSAGE SUBSET IDENTIFICATION	C		
0115	Message subset identification	M	an..14	VETB
0116	Message subset version number	C	an..3	1
0118	Message subset release number	C	an..3	99B
0051	Controlling agency, coded	C	an..3	
S017	MESSAGE IMPLEMENTATION GUIDELINE IDENTIFICATION	C		
0121	Message implementation subset identification	C	an..14	VZ
0122	Message implementation subset version number	C	an..3	1
0124	Message implementation subset release number	C	an..3	0
0051	Controlling agency, coded	C	an..3	
S018	SCENARIO IDENTIFICATION	C		



0127	Scenario identification	C	an..14	
0128	Scenario version number	C	an..3	
0130	Scenario release number	C	an..3	
0051	Controlling agency, coded	C	an..3	

It is intended that the amount of data per file does not exceed 20 Mb. Composite data element S010 does only occur if the number of bytes exceeds 20Mb.

Example 1: Transfer of an invoice in one message

UNH+1+INVOIC:D:99B:UN++VETB:1:99B+VZ:1:0'

Example 1: Transfer of an invoice in three messages

UNH+1+INVOIC:D:99B:UN+1:C+VETB:1:99B+VZ:1:0'

UNH+2+INVOIC:D:99B:UN+2+VETB:1:99B+VZ:1:0'

UNH+3+INVOIC:D:99B:UN+3:F+VETB:1:99B+VZ:1:0'



4.1.4 Segment BGM - Typ, number and status of invoice

Message - Section: Header

Segment - Group:

Segment: BGM

Segment - Name: Beginning of message

Description: Information about invoice

DE-No	Description	Status	Format	description/ valid codes
C002	DOCUMENT/MESSAGE NAME	C		
1001	Document/message name, coded	C	an..3	'380' invoice '381' credit note
1131	Code list qualifier	C	an..3	
3055	Code list responsible agency, coded	C	an..3	
1000	Document/message name	C	an..35	
1004	DOCUMENT/MESSAGE NUMBER	M	an..35	invoice number
1225	MESSAGE FUNCTION, CODED	C	an..3	'9' original '7' duplicate
4343	RESPONSE TYPE, CODED	C	an..3	

The credit note is equated with an invoice. This means that if there is listed a difference between invoice and itemised bill, the invoice includes the credit note.

Examples:

BGM+380+12345678+9'

BGM+381+98765432+9'

Note: The itemized bill is not in EDIFACT but as a flatfile with the following header:

"TYPE","Current_Account_ID","Current_Account_Name","Invoice_Account_ID","Invoice_Account_Name","Originating_Account_ID","Originating_Account_Name","Invoice_ID","Group_Name_1","Group_Name_2","Internal_ID","Product_Group","Product","Product_Component","Invoice_Text","Port_Level","Access_Level","Service_Name","Circuit_ID","Reference_Number","From_Date","To_Date","Charge","Currency","Charge_Type","Billing_Frequency","Site_Street_1","Site_Street_2","Site_Street_3","Site_City","Site_County","Site_Country","Site_Post_Code","Delivery_Number","Delivery_Date","Location_ID","Location_Name","Kit Name","Device_MAC_Address","Serial_Number","Invoice_Id","Invoiced_Invoice","Account_Id","Customer_Id","Tariff_Id","Subtotal_Id","Disc_Base","Disc_Pct","Disc_Type","No_Of_Calls","No_Of_Seconds","Pref_Language","Pref_Currency_Id","Iso_Country","Base_Prod_Id","Comp_Prod_Id","Service_Id","Bill_Freq_Id","Base_Prod_Instance","Price_Per_Mb","Charge_Id","Product_Group_Id","Key_Value","Product_Class"



4.1.5 Segment DTM - Invoice date and period

Message - Section: Header

Segment - Group:

Segment: DTM

Segment - Name: Date/time/period

Description: Invoice date and period

DE-No	Description	Status	Format	Description / valid codes
C507	DATE/TIME/PERIOD	M		
2005	Date/time/period qualifier	M	an..3	'3' date of invoice '194' first invoice(*) '206' last invoice(*) ,167' charge period start date ,168' charge period end date ,263' charged month(*) Invoice data or charge period
2380	Date/time/period	C	an..35	
2379	Date/time/period format qualifier	C	an..3	'102' (CCYYMMDD) ,610' (CCYYMM) only with date-qualifier 263, 194, 206

(*) These qualifiers cannot appear at the same time. Qualifiers 194 u. 206 indicate a status. Qualifier 263 means a „normal“ invoice.

Examples:

DTM+3:20091212:102'

DTM+263:200912:610'



4.1.6 Segment PAI – Payment instructions

Message - Section: Header

Segment - Group:

Segment: PAI

Segment - Name: Payment instructions

Description: Payment instructions: direct debit or credit transfer

DE-No	Description	Status	Format	Description / valid codes
C534	PAYMENT INSTRUCTION DETAILS	M		
4439	Payment conditions, coded	C	an..3	'1' direct payment
4431	Payment guarantee, coded	C	an..3	
4461	Payment means, coded	C	an..3	'3' direct debit '31' credit transfer
1131	Code list qualifier	C	an..3	
3055	Code list responsible agency, coded	C	an..3	
4435	Payment channel, coded	C	an..3	

Example: PAI+1::31'



4.1.7 Segment FTX – Free text

4.1.7.1 Segment FTX – Invoice Instruction/Invoice text

Message - Section: Header

Segment - Group:

Segment: FTX

Segment - Name: Free text

Description: Free text assigned to the invoice.

DE-No	Description	Status	Format	Description / valid codes
4451	TEXT SUBJECT QUALIFIER	M	an..3	'INV'
4453	TEXT FUNCTION, CODED	C	an..3	1
C107	TEXT REFERENCE	C		
4441	Free text, coded	M	an..3	
1131	Code list qualifier	C	an..3	
3055	Code list responsible agency, coded	C	an..3	
C108	TEXT LITERAL	C		
4440	Free text	M	an..512	1. line of text
4440	Free text	C	an..512	2. line of text
4440	Free text	C	an..512	3. line of text
4440	Free text	C	an..512	4. line of text
4440	Free text	C	an..512	5. line of text
3453	LANGUAGE NAME CODED	C	an..3	ISO 639 language code
4447	TEXT FORMATTING, CODED	C	an..3	

Example:

FTX+INV+1++Text1:Text2:Text3:Text4:Text5'



4.1.7.1 Segment FTX – Invoice language

Message - Section: Header

Segment - Group:

Segment: FTX

Segment - Name: Free text

Description: Invoice Language.

DE-No	Description	Status	Format	Description / valid codes
4451	TEXT SUBJECT QUALIFIER	M	an..3	ACB
4453	TEXT FUNCTION, CODED	C	an..3	
C107	TEXT REFERENCE	C		
4441	Free text, coded	M	an..3	
1131	Code list qualifier	C	an..3	
3055	Code list responsible agency, coded	C	an..3	
C108	TEXT LITERAL	C		
4440	Free text	M	an..512	
4440	Free text	C	an..512	
4440	Free text	C	an..512	
4440	Free text	C	an..512	
4440	Free text	C	an..512	
3453	LANGUAGE NAME CODED	C	an..3	Language code as defined in ISO 3166
4447	TEXT FORMATTING, CODED	C	an..3	

Example:

FTX+ACB++++DE'



4.1.8 Segment - Group 1

4.1.8.1 Segment RFF – Numbers

Message - Section: Header

Segment - Group: 1

Segment: RFF

Segment - Name: Reference

Description: Describes the relevant reference numbers

DE-No	Description	Status	Format	Description / valid codes
C506 1153	REFERENCE Reference qualifier	M M	an..3	'IV' = invoice number 'IT' = customer number 'ADE' = customer account 'PQ' = customer reference number 'PW' = customer purchase order 'AEP'= project name 'CT' = contract number Number
1154	Reference number	C	an..35	
1156	Line number	C	an..6	
4000	Reference version number	C	an..35	
1060	Revision number	C	an..6	

1154

The use of this data elements is controlled by qualifier 1153.

Example:

RFF+IV:12345678'

RFF+IT:12345678'





4.1.9 Segment - Group 2

4.1.9.1 Segment NAD – Addresses of the parties

Message - Section: Header

Segment - Group: 2

Segment: NAD

Segment - Name: Name and address

Description: Name and address of provider and invoicee

DE-No	Description	Status	Format	Description / valid codes
3035	PARTY QUALIFIER	M	an..3	'SE' provider 'IV' invoicee 'BY' buyer
C082	PARTY IDENTIFICATION DETAILS	C		
3039	Party id identification	M	an..35	
1131	Code list qualifier	C	an..3	
3055	Code list responsible agency, coded	C	an..3	
C058	NAME AND ADDRESS	C		
3124	Name and address line	M	an..35	
3124	Name and address line	C	an..35	
3124	Name and address line	C	an..35	
3124	Name and address line	C	an..35	
3124	Name and address line	C	an..35	
C080	PARTY NAME	C		
3036	Party name	M	an..35	Name1
3036	Party name	C	an..35	Name2
3036	Party name	C	an..35	Name3
3036	Party name	C	an..35	Name4
3036	Party name	C	an..35	Name5
3045	Party name format, coded	C	an..3	
C059	STREET	C		
3042	Street and number/P.O. Box	M	an..35	street and number/ P.O. Box
3042	Street and number/P.O. Box	C	an..35	street and number/ P.O. Box
3042	Street and number/P.O. Box	C	an..35	street and number/ P.O. Box
3164	CITY NAME	C	an..35	City



3229	COUNTRY SUB-ENTITY IDENTIFICATION	C	an..9	
3251	POSTCODE IDENTIFICATION	C	an..9	ZIP-code
3207	COUNTRY, CODED	C	an..3	ISO 3166 country code 'DE' for Germany

Example:

NAD+SE+++VERIZON:DEUTSCHLAND+SEBRATHWEG+DORTMUND++44149+DE'
NAD+IV+++JOHN Q. PUBLIC+SAMPLE STREET 1+MUNSTER++29633+DE'



4.1.9.2 Segment FII – Financial institution information of seller and invoicee

Message - Section: Header

Segment - Group: 2

Segment: FII

Segment - Name: Financial institution information

Description: Financial institution information of seller and invoicee

DE-No	Description	Status	Format	Description / calid codes
3035	PARTY QUALIFIER	M	an..3	'SE' seller 'BK' international bank account seller 'IV' invoicee
C078	ACCOUNT IDENTIFICATION	C		
3194	Account holder number	C	an..35	Account number/IBAN
3192	Account holder name	C	an..105	Name1
3192	Account holder name	C	an..105	Name2
6345	Currency, coded	C	an..3	
C088	INSTITUTION IDENTIFICATION	C		
3433	Institution name identification	C	an..12	Bank identifier/BIC
1131	Code list qualifier	C	an..3	
3055	Code list responsible agency, coded	C	an..3	
3434	Institution branch number	C	an..17	Bank branch office identifier
1131	Code list qualifier	C	an..3	
3055	Code list responsible agency, coded	C	an..3	
3432	Institution name	C	an..70	Bank name
3436	Institution branch place	C	an..70	
3207	COUNTRY, CODED	C	an..3	ISO 3166 country code

Example:

FII+SE+1234554321:VERIZON+10070000:.....BANK OF DORTMUND+DE'

FII+BK+DE0000001234554321+PBNKDDEF012'

FII+IV+1234554321:JOHN Q. PUBLIC+10070000:.....IT BANK+DE'



4.1.9.3 Segment - Group 3

4.1.9.3.1 Segment RFF – Numbers

Message - Section: Header

Segment - Group: 3

Segment: RFF

Segment - Name: Reference

Description: Information about fiscal number and VAT Reg No.

DE-No	Description	Status	Format	Description / valid codes
C506	REFERENCE	M		
1153	Reference qualifier	M	an..3	'FC' = fiscal number 'VA' = VAT Reg No. Number
1154	Reference number	C	an..35	
1156	Line number	C	an..6	
4000	Reference version number	C	an..35	
1060	Revision number	C	an..6	

1154: The use of this data element is controlled by qualifier 1153.

Example:

RFF+FC:007/0815/0816'

RFF+VA:DE 12345678'



4.1.9.4 Segment - Group 5

4.1.9.4.1 Segment CTA – Contact information

Message - Section: Header

Segment - Group: 5

Segment: CTA

Segment - Name: Contact information

Description:

DE-No	Description	Status	Format	Description / valid Codes
3139	CONTACT FUNCTION, CODED	C	an..3	'IC' information contact
C056	DEPARTMENT OR EMPLOYEE DETAILS	C		
3413	Department or employee identification	C	an..17	
3412	Department or employee	C	an..35	name

Example:

CTA+IC+:Callcentre 1'



4.1.9.4.2 Segment COM – Telephone –/ telefaxnumber / E-Mail of sender

Message - Section: Header

Segment - Group: 5

Segment: COM

Segment - Name: Communication contact

Description: Phone-, faxnumber or E-Mail for invoice information

DE-No	Description	Status	Format	Description / valid codes
C076	COMMUNICATION CONTACT	M		
3148	Communication number	M	an..512	Phone- or fax number for invoice information
3155	Communication channel qualifier	M	an..3	'TE' Phone 'FX' Fax 'EM' E-Mail

Example:

COM+0223 23-456:TE'

COM+0223 23-123:FX'

COM+contact@verizon.com:EM'



4.1.10 Segment - Group 6

4.1.10.1 Segment TAX – VAT relating to the whole invoice

Message - Section: Header

Segment - Group: 6

Segment: TAX

Segment - Name: Duty/tax/fee details

Description: VAT of the invoice at the standard rate (can be superseded by tax segments of the invoice positions)

DE-No	Description	Status	Format	Description / valid codes
5283	DUTY/TAX/FEE FUNCTION QUALIFIER	M	an..3	'9' VAT rate for the whole invoice
C241	DUTY/TAX/FEE TYPE	C		'VAT' Value added tax
5153	Duty/tax/fee type, coded	C	an..3	
1131	Code list qualifier	C	an..3	
3055	Code list responsible agency, coded	C	an..3	
5152	Duty/tax/fee type	C	an..35	
C533	DUTY/TAX/FEE ACCOUNT DETAIL	C		
5289	Duty/tax/fee account identification	M	an..6	
1131	Code list qualifier	C	an..3	
3055	Code list responsible agency, coded	C	an..3	
5286	DUTY/TAX/FEE ASSESSMENT BASIS	C	an..15	
C243	DUTY/TAX/FEE DETAIL	C		Tax in percent
5279	Duty/tax/fee rate identification	C	an..7	
1131	Code list qualifier agency, coded	C	an..3	
3055	Code list responsible agency, coded	C	an..3	
5278	Duty/tax/fee rate	C	an..17	
5273	Duty/tax/fee rate basis identification	C	an..12	
1131	Code list qualifier	C	an..3	
3055	Code list responsible agency, coded	C	an..3	
5305	DUTY/TAX/FEE CATEGORY, CODED	C	an..3	
3446	PARTY TAX IDENTIFICATION NUMBER	C	an..20	
3446	PARTY TAX IDENTIFICATION NUMBER	C	an..20	

Example:

TAX+9+VAT+++:::16'



4.1.11 Segment - Group 7

4.1.11.1 Segment CUX - Currency

Message - Section: Header

Segment - Group: 7

Segment: CUX

Segment - Name: Currencies

Description: Charge payment currency

DE-No	Description	Status	Format	Description / valid codes
C504 6347	CURRENCY DETAILS Currency details qualifier	C M	an..3	'1' charge payment currency
6345	Currency, coded	C	an..3	'EUR' EURO ISO 4217 currency code
6343	Currency qualifier	C	an..3	
6348	Currency rate base	C	n..4	
C504 6347	CURRENCY DETAILS Currency details qualifier	C M	an..3	'6' information currency
6345	Currency, coded	C	an..3	'GBP' ISO 4217 currency code
6343	Currency qualifier	C	an..3	
6348	Currency rate base	C	n..4	
5402	RATE OF EXCHANGE	C	n..12	Rate of exchange. Amount to pay in currency '1' multiplied by rate of exchange results in amount to pay in the target currency '3'.
6341	CURRENCY MARKET EXCHANGE, CODED	C	an..3	

Examples:

CUX+1:EUR+6'

CUX+1:GBP+6:EUR+0.667965'



4.1.12 Segment - Group 8

4.1.12.1 Segment PAT – Terms of payment

Message - Section: Header

Segment - Group: 8

Segment: PAT

Segment - Name: Payment terms basis

Description: Terms of payment

DE-No	Description	Status	Format	Description / valid codes
4279	PAYMENT TERMS TYPE QUALIFIER	M	an..3	'5' discount not applicable
C110	PAYMENT TERMS	C		
4277	Terms of payment identification	M	an..17	
1131	Code list qualifier	C	an..3	
3055	Code list responsible agency, coded	C	an..3	
4276	Terms of payment	C	an..35	
4276	Terms of payment	C	an..35	
C112	TERMS/TIME INFORMATION			
2475	Payment time reference, coded	M	an..3	'72' payment date
2009	Time relation, coded	C	an..3	'1' reference date
2151	Type of period, coded	C	an..3	
2152	Number of periods	C	n..3	

Example:

PAT+5++72:1'



4.1.12.2 Segment DTM – Net due date

Message - Section: Header
Segment - Group: 8
Segment: DTM
Segment - Name: Date/time/period
Description: Net due date

DE-No	Description	Status	Format	Description / valid codes
C507	DATE/TIME/PERIOD	M		
2005	Date/time/period qualifier	M	an..3	'13' net due date
2380	Date/time/period	C	an:35	Payment date in form CCYYMMDD
2379	Date/time/period format qualifier	C	an..3	Standard: '102' (CCYYMMDD); will not be stated

Example:

DTM+13:20091221'



4.1.13 Segment - Group 16

4.1.13.1 Segment ALC – Discount rules

Message - Section: Header

Segment - Group: 16

Segment: ALC

Segment - Name: Allowance or charge

Description: Invoice discount rules

DE-No	Description	Status	Format	Description / valid codes
5463	ALLOWANCE OR CHARGE	M	an..3	'A'
C552	ALLOWANCE/CHARGE INFORMATION	C		
1230	Allowance or charge number	C	an..35	
5189	Charge / allowance description, coded	C	an..3	
4471	SETTLEMENT, CODED	C	an..3	
1227	CALCULATION SEQUENCE INDICATOR, CODED	C	an..3	
C214	SPECIAL SERVICES IDENTIFICATION	C		
7161	Special services, coded	C	an..3	
1131	Code list qualifier	C	an..3	
3055	Code list responsible agency, coded	C	an..3	
7160	Special service description	C	an..35	Discount number
7160	Special service description	C	an..35	

Example:

ALC+A++++:::VE1234'



4.2. Detail Section

4.2.1 Segment - Group 26

4.2.1.1 Segment LIN – Configuration levels

Message - Section: Detail

Segment - Group: 26

Segment: LIN

Segment - Name: Line item

Description: Configuration levels within the invoice

DE-No	Description	Status	Format	Description / valid codes
1082	LINE ITEM NUMBER	C	n..6	Sequential line-number
1229	ACTION REQUEST/ NOTIFICATION, CODED	C	an..3	
C212	ITEM NUMBER IDENTIFICATION	C		
7140	Item number	C	an..35	
7143	Item number type, coded	C	an..3	Item type identification code
1131	Code list qualifier	C	an..3	
3055	Code list responsible agency, coded	C	an..3	
C829	SUB-LINE INFORMATION			
5495	SUB-LINE INDICATOR, CODED	C	an..3	'1' sub-line indicator
1082	LINE ITEM NUMBER	C	n..6	Sequential number of the next higher configuration level
1222	CONFIGURATION LEVEL	C	n..2	Number of the configuration level
7083	CONFIGURATION, CODED	C	an..3	



The message detail section introduces hierarchy levels. The different hierarchy levels are differentiated by DE 1222, the highest level starts with 0. The composite data element C829 indicates if the level is a sub-level, and in data-element GR25:LIN:C829:1082 it states the content of data-element GR25:LIN:1082 (Line item number) of the next higher level.

Level	DE 7143	DE 5495	DE 1222	Description
	Invoice			
1	SEC		1	Section of the invoice
2	ARP	1	2	Grouping information
3	REF	1	3	Internet product/ service information
4	GRP	1	4	Recurring, non-recurring, usage, and discount groups
5	POS	1	5	Invoice text and actual charge information

All Level:

- Additional information in segment IMD

Examples:

LIN+1++:SEC++1'

LIN+2++:ARP+1:1+2'

LIN+3++:REF+1:2+3'

LIN+4++:GRP+1:3+4'

LIN+5++:POS+1:4+5'



4.2.1.2 Segment IMD – Item description

Message - Section: Detail
Segment - Group: 26
Segment: IMD
Segment - Name: Item description
Description: Additional description

DE-No	Description	Status	Format	Description / valid codes
7077	ITEM DESCRIPTION TYPE, CODED	C	an..3	'F' free text
7081	ITEM CHARACTERISTIC, CODED	C	an..3	
C273	ITEM DESCRIPTION	C		
7009	Item description identification	C	an..17	SEC, ARP, REF, GRP, POS or VBD
1131	Code list identification code	C	an..3	
3055	Code list responsible agency code	C	an..3	
7008	Item description	C	an..256	see table of codes
7008	Item description	C	an..256	Corresponding text
3453	Language name code	C	an..3	
7383	SURFACE/LAYER CODE	C	an..3	

Contents:



Level	Qualifier	IMD	Description
1	SEC	Voice/ Internet/ Discounts/ Equipment	Section of the Invoice
2	ARP	Voice: Not applicable Indirect: Product Group Discounts: Discount Type Equipment: Product Group	Grouping information
3	REF	Voice: Not applicable Indirect: Product / Service ID / Circuit ID Discounts: Not Applicable Equipment: Product/Service ID	Internet product/service information
4	GRP	Voice: MRR/NRR/USAGE Indirect: MRR/NRR/USAGE Discounts: DISCOUNT Equipment: MRR/NRR	Recurring, Non-recurring, Usage and Discount groups.
5	POS	Invoice Text	Invoice text and actual charge information

Example:

IMD+F++SEC:::12345678'

IMD+F++SEC:::Internet'

IMD+F++REF:::Wholesale DSL EndUser/49112233999/

IMD+F++GRP:::NRR'

IMD+F++GRP:::MRR'

IMD+F++POS:::1234:LOCAL'

IMD+F++POS:::DSL Service Set Up'



4.2.1.3 Segment IMD – Line item description

Message - Section: Detail
Segment - Group: 26
Segment: IMD
Segment - Name: Item description
Description: Additional codes for the description

DE-No	Description	Status	Format	Description / valid codes
7077	ITEM DESCRIPTION TYPE, CODED	C	an..3	'C' Code
7081	ITEM CHARACTERISTIC, CODED	C	an..3	
C273	ITEM DESCRIPTION	C		
7009	Item description identification	C	an..17	Verizon table of codes
1131	Code list identification code	C	an..3	
3055	Code list responsible agency code	C	an..3	
7008	Item description	C	an..256	Code or number of the corresponding information
7008	Item description	C	an..256	
3453	Language name code	C	an..3	
7383	SURFACE/LAYER INDICATOR, CODED	C	an..3	

Example:

IMD+C++ZZ::NIGHT



4.2.1.4 Segment QTY - Quantity

Message - Section: Detail
Segment - Group: 26
Segment: QTY
Segment - Name: Quantity
Description: Quantity

DE-No	Description	Status	Format	Description / valid codes
C186	QUANTITY DETAILS	M		
6063	Quantity qualifier	M	an..3	Quantity identification
6060	Quantity	M	n..15	Quantity
6411	Measure unit qualifier	C	an..3	Measurement unit code

Example:

QTY+107:501:SEC'

Quantity identification:

Quantity identification	6063
Unit	107

Measurement unit code	6411
Seconds	SEC
Tariff units	TE
Number of calls	GA
KiloByte	KB
Megabyte	MB
Minutes	MIN
General units of quantity	NAR



4.2.1.5 Segment DTM - Date

Message - Section: Detail
Segment - Group: 26
Segment: DTM
Segment - Name: Date/time/period
Description: Date of the item

DE-No	Description	Status	Format	Descriptor / valid codes
C507	DATE/TIME/PERIOD	M		
2005	Date/time/period qualifier	M	an..3	See table
2380	Date/time/period	C	an..35	
2379	Date/time/period format qualifier	C	an..3	See table

Examples:

DTM+194:20091201:102'

DTM+163:20091203071034:204'

Table:

Date qualifier	DE 2005	DE 2379	Format
Date	7	102	CCYYMMDD
Accounting period start date	194	102	CCYYMMDD
Accounting period end date	206	102	CCYYMMDD
Processing start time	163	204	CCYYMMDDHHMMSS
Processing end time	164	204	CCYYMMDDHHMMSS



4.2.1.6 Segment FTX – Additional free text

Message - Section: Detail

Segment - Group: 26

Segment: FTX

Segment - Name: Free text

Description: Free text assigned to the invoice item

DE-No	Description	Status	Format	Description / valid codes
4451	TEXT SUBJECT QUALIFIER	M	an..3	'LIN' text on line item
4453	TEXT FUNCTION, CODED	C	an..3	'1' text for subsequent use
C107	TEXT REFERENCE	C		
4441	Free text, coded	M	an..3	
1131	Code list qualifier	C	an..3	
3055	Code list responsible agency, coded	C	an..3	
C108	TEXT LITERAL	C		
4440	Free text	M	an..70	Line 1
4440	Free text	C	an..70	Line 2
4440	Free text	C	an..70	Line 3
4440	Free text	C	an..70	Line 4
4440	Free text	C	an..70	Line 5
3453	LANGUAGE NAME CODED	C	an..3	ISO 639 language code
4447	TEXT FORMATTING, CODED	C	an..3	

Example:

FTX+LIN+1++Item text '



4.2.1.7 Segment - Group 27

4.2.1.7.1 Segment MOA – Monetary amount

Message - Section: Detail
Segment - Group: 27
Segment: MOA
Segment - Name: Monetary amount
Description: Invoice item amount

DE-No	Description	Status	Format	Description / valid codes
C516 5025	MONETARY AMOUNT Monetary amount type qualifier	M M	an..3	,1' information ,25'discount basis '8' discount amount '38' net amount per invoice item '132' gross amount per invoice item (third partie provider)
5004	Monetary amount	C	n..18	Amount
6345	Currency, coded	C	an..3	
6343	Currency qualifier	C	an..3	
4405	Status, coded	C	an..3	'9' information

DE 4405:

The code '9' shows, that this amount is not a 'true' invoice item to pay, it is only information

Example:

MOA+38:115.23'

MOA+1:47.11:::9'



4.2.1.8 Segment - Group 29

4.2.1.8.1 Segment PRI – Unit price

Message - Section: Detail
Segment - Group: 29
Segment: PRI
Segment - Name: Price details
Description: Unit price

DE-No	Description	Status	Format	Description / valid codes
C509	PRICE INFORMATION	C		
5125	Price qualifier	M	an..3	'CAL'
5118	Price	C	n..15	Amount (with sign, decimal point and up to 5 decimals)
5375	Price type, coded	C	an..3	
5387	Price type qualifier	C	an..3	
5284	Unit price basis	C	n..9	
6411	Measure unit qualifier	C	an..3	
5213	SUB-LINE PRICE CHANGE, CODED	C	an..3	

Example:

PRI+CAL:0.1043'



4.2.1.9 Segment - Group 30

4.2.1.9.1 Segment RFF – Numbers

Message - Section: Detail

Segment - Group: 30

Segment: RFF

Segment - Name: Reference

Description: Describes the relevant reference numbers

DE-No	Description	Status	Format	Description / valid codes
C506 1153	REFERENCE Reference qualifier	M M	an..3	'CO' = customer reference number 'CT' = contract number 'IV' = invoice number 'FC' = fiscal number of third partie provider CR1 : Customer reference number CR2: PSP Customer reference number CR3: GLA Customer reference number
1154	Reference number	C	an..35	Number
1156	Line number	C	an..6	
4000	Reference version number	C	an..35	
1060	Revision number	C	an..6	

DE 1154

The use of this data elements is controlled by qualifier 1153.

Example:

RFF+IV:12345678'



RFF+FC:99/999/999'



4.2.1.9.2 Segment DTM - Date

Message - Section: Detail
Segment - Group: 30
Segment: DTM
Segment - Name: Date/time/period
Description: Date of the reference

DE-No	Description	Status	Format	Descripton / valid codes
C507	DATE/TIME/PERIOD	M		
2005	Date/time/period qualifier	M	an..3	'7'
2380	Date/time/period	C	an..35	Date
2379	Date/time/period format qualifier	C	an..3	'102' format CCYYMMDD

Example:

DTM+7:20091215:102'



4.2.1.10 Segment - Group 33

4.2.1.10.1 Segment-LOC - Location

Message - Section: Detail

Segment - Group: 33

Segment: LOC

Segment - Name: Place/location identification

Description: The segment indicates the destination/departure phone number and destination zone.

DE-No	Format	Status	Description	Description / valid codes
3227	an..3	M	PLACE/LOCATION QUALIFIER	,5' place of departure ,8' place of destination
C517 - 3225 - 1131 - 3055 - 3224	an..25 an..3 an..3 an..256	C C C C	LOCATION IDENTIFICATION Place/location identification Code list qualifier Code list responsible agency, coded Place/location	phone number network name
C519 - 3223 - 1131 - 3055 - 3222	an..25 an..3 an..3 an..70	C C C C	RELATED LOCATION ONE IDENTIFICATION Related place/location one identification Code list qualifier Code list responsible agency, coded Related place/location one	
C553 - 3233 - 1131 - 3055 - 3232	an..25 an..3 an..3 an..70	C C C C	RELATED LOCATION TWO IDENTIFICATION Related place/location two identification Code list qualifier Code list responsible agency, coded Related place/location two	
5479	an..3	C	RELATION, CODED	

Examples:

LOC+8+08150815:::Dortmund'



LOC+8+01710815:::D1'



4.2.1.11 Segment - Group 34

4.2.1.11.1 Segment TAX – VAT relating to line item

Message - Section: Detail

Segment - Group: 34

Segment: TAX

Segment - Name: Duty/tax/fee details

Description: VAT rate for the invoice item. Supersedes the default VAT rate provided in the header section.

DE-No	Description	Status	Format	Description / valid codes
5283	DUTY/TAX/FEE FUNCTION QUALIFIER	M	an..3	'1' VAT rate for the invoice item
C241 5153 1131 3055	DUTY/TAX/FEE TYPE Duty/tax/fee type, coded Code list qualifier Code list responsible agency, coded	C C C C	 an..3 an..3 an..3	'VAT' Value added tax
5152 C533 5289 1131 3055	Duty/tax/fee type DUTY/TAX/FEE ACCOUNT DETAIL Duty/tax/fee account identification Code list qualifier Code list responsible agency, coded	C C M C C	 an..35 an..6 an..3 an..3	
5286	DUTY/TAX/FEE ASSESSMENT BASIS	C	an..15	
C243 5279 1131 3055 5278 5273 1131 3055	DUTY/TAX/FEE DETAIL Duty/tax/fee rate identification Code list qualifier agency, coded Code list responsible agency, coded Duty/tax/fee rate Duty/tax/fee rate basis identification Code list qualifier Code list responsible agency, coded	C C C C C C C C	 an..7 an..3 an..3 an..17 an..12 an..3 an..3	VAT rate in percent (optional with decimal point and decimals)
5305	DUTY/TAX/FEE CATEGORY, CODED	C	an..3	
3446	PARTY TAX IDENTIFICATION NUMBER	C	an..20	

Example:



TAX+1+VAT+++:::0'



4.2.1.12 Segment - Group 35

4.2.1.12.1 Segment NAD – Different address information

Message - Section: Detail

Segment - Group: 35

Segment: NAD

Segment - Name: Name and address

Description: Specify the location, service user and the service provider

DE-No	Description	Status	Format	Description / valid codes
3035	PARTY QUALIFIER	M	an..3	'DP' service user / location 'SU' service provider
C082	PARTY IDENTIFICATION DETAILS	C		Specification
3039	Party id identification	M	an..35	
1131	Code list qualifier	C	an..3	
3055	Code list responsible agency, coded	C	an..3	
C058	NAME AND ADDRESS	C		Name or address
3124	Name and address line	M	an..35	
3124	Name and address line	C	an..35	
3124	Name and address line	C	an..35	
3124	Name and address line	C	an..35	
3124	Name and address line	C	an..35	
C080	PARTY NAME	C		
3036	Party name	M	an..35	
3036	Party name	C	an..35	
3036	Party name	C	an..35	
3036	Party name	C	an..35	
3036	Party name	C	an..35	
3045	Party name format, coded	C	an..3	
C059	STREET	C		
3042	Street and number/P.O. Box	M	an..35	
3042	Street and number/P.O. Box	C	an..35	
3042	Street and number/P.O. Box	C	an..35	
3164	CITY NAME	C	an..35	
3229	COUNTRY SUB-ENTITY IDENTIFICATION	C	an..9	
3251	POSTCODE IDENTIFICATION	C	an..9	
3207	COUNTRY, CODED	C	an..3	

Table:



address qualifier	Level	DE 3035	DE 3039	DE-Group C058
Location	0	DP	Location	Location address
Service user	3	DP	Cost Center	Service user name
Service provider	3	SU	Provider ID	Service provider address

Examples:

NAD+DP+DORTMUND'

NAD+DP+123+JOHN Q'

NAD+SU+01001+TESTCOM'



4.2.1.12.1.1 Segment - Group 38

4.2.1.12.1.1.1 Segment CTA – Contact information

Message - Section: Detail
Segment - Group: 38
Segment: CTA
Segment - Name: Contact information
Description: Only used for the service provider

DE-No	Description	Status	Format	Description / valid Codes
3139	CONTACT FUNCTION, CODED	C	an..3	'IC' information contact
C056	DEPARTMENT OR EMPLOYEE DETAILS	C		
3413	Department or employee identification	C	an..17	
3412	Department or employee	C	an..35	

Example:

CTA+IC'



4.2.1.12.1.1.2 Segment COM – Telephone –/ telefaxnumber / E-Mail

Message - Section: Detail

Segment - Group: 38

Segment: COM

Segment - Name: Communication contact

Description: Phone-, faxnumber or E-Mail from the service provider

DE-No	Description	Status	Format	Description / valid codes
C076	COMMUNICATION CONTACT	M		
3148	Communication number	M	an..512	Phone- or fax number for invoice information
3155	Communication channel qualifier	M	an..3	'TE' Phone 'FX' Fax 'EM' E-Mail

Example:

COM+0223 23-456:TE'

COM+0223 23-123:FX'

COM+CONTACT@PROVIDER.COM:EM'



4.2.1.13 Segment - Group 39

4.2.1.13.1 Segment ALC – Discount rules

Message - Section: Detail
 Segment - Group: 39
 Segment: ALC
 Segment - Name: Allowance or charge
 Description: Discount rules

DE-No	Description	Status	Format	Description / valid codes
5463	ALLOWANCE OR CHARGE	M	an..3	'H' Discount for invoice item
C552	ALLOWANCE/CHARGE INFORMATION	C		Discount description
1230	Allowance or charge number	C	an..35	
5189	Charge / allowance description, coded	C	an..3	
4471	SETTLEMENT, CODED	C	an..3	'4' Discount as credit
1227	CALCULATION SEQUENCE INDICATOR, CODED	C	an..3	
C214	SPECIAL SERVICES IDENTIFICATION	C		
7161	Special services, coded	C	an..3	
1131	Code list qualifier	C	an..3	
3055	Code list responsible agency, coded	C	an..3	
7160	Special service description	C	an..35	
7160	Special service description	C	an..35	

Example:

ALC+H+FREEFON+4+'



4.2.1.13.1.1 Segment DTM – Date Information for Discount Rule

Message - Section: Detail
Segment - Group: 39
Segment: DTM
Segment - Name: Date/time/period
Description: Date information for discount rule

DE-No	Description	Status	Format	Description / valid codes
C507	DATE/TIME/PERIOD	M		
2005	Date/time/period qualifier	M	an..3	'194' Beginning '206' End
2380	Date/time/period	C	an..35	date
2379	Date/time/period format qualifier	C	an..3	'102' (CCYYMMDD)

Examples:

DTM+194:20050101:102'



4.2.1.13.1.2 Segment - Group 40

4.2.1.13.1.2.1 Segment QTY – Discount of Units

Message - Section: Detail
Segment - Group: 40
Segment: QTY
Segment - Name: Quantity
Description: Discount of units

DE-No	Description	Status	Format	Description / valid codes
C186	QUANTITY DETAILS	M		
6063	Quantity qualifier	M	an..3	'107' invoiced units
6060	Quantity	M	n..15	Units
6411	Measure unit qualifier	C	an..3	

Example:
QTY+107:25'



4.2.1.13.1.2.2 Segment RNG – Range Details

Message - Section: Detail
Segment - Group: 40
Segment: RNG
Segment - Name: Range details
Description: Range details

DE-No	Description	Status	Format	Description / valid codes
6167	RANGE TYPE QUALIFIER	M	an..3	'1' Discount
C280	RANGE	C		
6411	Measure unit qualifier	M	an..3	'NPT' number of units
6162	Range minimum	C	n..18	Range minimum
6152	Range maximum	C	n..18	Range maximum

Example:

RNG+1+NPT:0:100'



4.2.1.13.1.3 Segment - Group 41

4.2.1.13.1.3.1 Segment PCD – Discount Based on Percentage

Message - Section: Detail
Segment - Group: 41
Segment: PCD
Segment - Name: Percentage details
Description: Discount based on Percentage

DE-No	Description	Status	Format	Description / valid codes
C501	PERCENTAGE DETAILS	M		
5245	Percentage qualifier	M	an..3	'1' discount
5482	Percentage	C	n..8	Percentage (optional decimal point with decimals)
5249	Percentage basis, coded	C	an..3	
1131	Code list qualifier	C	an..3	
3055	Code list responsible agency, coded	C	an..3	

Example:

PCD+1:7.5'



4.2.1.13.1.3.2 Segment RNG – Range Details

Message - Section: Detail
Segment - Group: 41
Segment: RNG
Segment - Name: Range details
Description: Range details

DE-No	Description	Status	Format	Description / valid codes
6167	RANGE TYPE QUALIFIER	M	an..3	'1' Discount
C280	RANGE	C		
6411	Measure unit qualifier	M	an..3	,EUR' EURO ISO 4217 currency code
6162	Range minimum	C	n..18	Range minimum
6152	Range maximum	C	n..18	Range maximum

Example:

RNG+1:EUR:100:199.99'



4.2.1.13.1.4 Segment - Group 42

4.2.1.13.1.4.1 Segment MOA – Monetary Amount Discount

Message - Section: Detail

Segment - Group: 42

Segment: MOA

Segment - Name: Monetary amount

Description: Monetary amount Discount

DE-No	Description	Status	Format	Description / valid codes
C516	MONETARY AMOUNT	M		
5025	Monetary amount type qualifier	M	an..3	'25' Amount subject to discount
5004	Monetary amount	C	n..18	Amount
6345	Currency, coded	C	an..3	
6343	Currency qualifier	C	an..3	
4405	Status, coded	C	an..3	

Example:

MOA+25:7000'



4.2.1.13.1.4.2 Segment RNG – Range Details for Adjustments

Message - Section: Detail
Segment - Group: 42
Segment: RNG
Segment - Name: Range details
Description: Range details for adjustments to guaranteed minimum charge

DE-No	Description	Status	Format	Description / valid codes
6167	RANGE TYPE QUALIFIER	M	an..3	'1' Discount
C280	RANGE	C		
6411	Measure unit qualifier	M	an..3	,'EUR' EURO ISO 4217 currency code
6162	Range minimum	C	n..18	Range minimum
6152	Range maximum	C	n..18	Range maximum

Example:

RNG+1:EUR:89.90'



4.3 Summary Section

4.3.1 Segment UNS – Section control

Message - Section: Summary
Segment - Group:
Segment: UNS
Segment - Name: Section control
Description: Section control

DE-No	Description	Status	Format	Description / valid codes
0081	Section control	M	an...3	'S' separates Detail and Summary Section

Example:

UNS+S'



4.3.2 Segment - Group 50

4.3.2.1 Segment MOA – Monetary amount

Message - Section: Summary
Segment - Group: 50
Segment: MOA
Segment - Name: Monetary amount
Description: Monetary amount

DE-No	Description	Status	Format	Description / valid codes
C516	MONETARY AMOUNT	M		
5025	Monetary amount type qualifier	M	an..3	'9' amount payable '77' gross amount '79' net amount '124' tax amount '125' taxable amount '132' summarized gross amount (third parties) '136' forwarded amount from last bill '138' discount amount
5004	Monetary amount	C	n..18	Amount
6345	Currency, coded	C	an..3	If different to header currency
6343	Currency qualifier	C	an..3	
4405	Status, coded	C	an..3	'9' information

Example:

MOA+79:125.23'
MOA+77:125.23'
MOA+77:63.57:EUR::9'

Example with amounts:

Net 500,00 (taxable amount: 500,00)



VAT	(16%)	80,00
Gross		580,00
Third parties		40,00
Amount payable		620,00



4.3.3 Segment - Group 52

4.3.3.1 Segment TAX – Individual VAT rates of invoice

Message - Section: Summary

Segment - Group: 52

Segment: TAX

Segment - Name: Duty/tax/fee details

Description: Individual VAT rates of invoice

DE-No	Description	Status	Format	Description / valid codes
5283	DUTY/TAX/FEE FUNCTION QUALIFIER	M	an..3	'3' VAT
C241 5153	DUTY/TAX/FEE TYPE Duty/tax/fee type, coded	C C	an..3	'VAT' Value added tax for Verizon 'VTP' Value added tax for third parties
1131 3055	Code list qualifier Code list responsible agency, coded	C C	an..3 an..3	
5152	Duty/tax/fee type	C	an..35	
C533 5289 1131 3055	DUTY/TAX/FEE ACCOUNT DETAIL Duty/tax/fee account identification Code list qualifier Code list responsible agency, coded	C M C C	an..6 an..3 an..3	
5286	DUTY/TAX/FEE ASSESSMENT BASIS	C	an..15	
C243 5279 1131 3055 5278	DUTY/TAX/FEE DETAIL Duty/tax/fee rate identification Code list qualifier Code list responsible agency, coded Duty/tax/fee rate	C C C C C	an..7 an..3 an..3 an..17	VAT rate as percentage (with decimal point and decimals)
5273 1131 3055	Duty/tax/fee rate basis identification Code list qualifier Code list responsible agency, coded	C C C	an..12 an..3 an..3	
5305	DUTY/TAX/FEE CATEGORY, CODED	C	an..3	
3446	PARTY TAX IDENTIFICATION	C	an..20	



Message - Section: Summary
Segment - Group: 52
Segment: TAX
Segment - Name: Duty/tax/fee details
Description: Individual VAT rates of invoice

DE-No	Description	Status	Format	Description / valid codes
	NUMBER			
1227	CALCULATION SEQUENCE INDICATOR, CODED	C	an..3	

Examples:

TAX+3+VAT+++:::16'

TAX+3+VTP+++:::19.5'



4.3.3.2 Segment MOA – individual VAT amounts of invoice

Message - Section: Summary
Segment - Group: 52
Segment: MOA
Segment - Name: Monetary amount
Description: Individual VAT amounts of invoice

DE-No	Description	Status	Format	Description / valid codes
C516	MONETARY AMOUNT	M		
5025	Monetary amount type	M	an..3	'124' tax amount '125' taxable amount
5004	Monetary amount	C	n..18	Amount
6345	Currency, coded	C	an..3	
6343	Currency qualifier	C	an..3	
4405	Status, coded	C	an..3	

Example:

MOA+125:10'

MOA+124:20.98'



4.3.4 Segment UNT

Message - Section: Summary

Segment - Group:

Segment: UNT

Segment - Name: Message trailer

Description: Last segment in a message

DE-No	Description	Status	Format	Description / valid codes
0074	NUMBER OF SEGMENTS IN THE MESSAGE	M	n..10	Number of segments in the message
0062	MESSAGE REFERENCE NUMBER	M	an..14	Sequence number of the message within the interchange

Example:

UNT+255+2'



4.3.5 Segment UNZ

Message - Section: Summary
Segment - Group:
Segment: UNZ
Segment - Name: Interchange trailer
Description: Last segment in the interchange

DE-No	Description	Status	Format	Description / valid codes
0036	INTERCHANGE CONTROL COUNT	M	n..6	Number of message in the interchange
0020	INTERCHANGE CONTROL REFERENCE	M	an..14	Sequence number of the interchange

Example:
UNZ+4+9'