

LV65 Indoor/Outdoor Receiver

September 12, 2022

Version 1.0

Document History

Version	Date	Change	Verizon POC
1	September 12, 2022	Initial version	

Document Approvals

Name	Title	Company	Date of Approval

Federal Communication Commission Interference Statement

This equipment has been tested and found to comply with the limits for a Class B digital device, pursuant to part 15 of the FCC Rules. These limits are designed to provide reasonable protection against harmful interference in a residential installation. This equipment generates, uses and can radiate radio frequency energy and, if not installed and used in accordance with the instructions, may cause harmful interference to radio communications. However, there is no guarantee that interference will not occur in a particular installation. If this equipment does cause harmful interference to radio or television reception, which can be determined by turning the equipment off and on, the user is encouraged to try to correct the interference by one or more of the following measures:

- Reorient or relocate the receiving antenna.
- Increase the separation between the equipment and receiver.
- Connect the equipment into an outlet on a circuit different from that to which the receiver is connected.
- Consult the dealer or an experienced radio/ TV technician for help.

FCC Caution: Any changes or modifications not expressly approved by the grantee of this device could void the user's authority to operate the equipment.

RF Exposure Statement

To comply with FCC RF exposure compliance requirements, the antenna used for this transmitter must be installed to provide a separation distance of at least 8 inches from all persons (indoor), at least 21 inches from all persons (outdoor), and must not be co-located or operating in conjunction with any other antenna or transmitter.

When installed on a wall in an outdoor location, the device must be installed at a height above head level to prevent people from standing directly in front of the device and in the line of sight between the device and the 5G base station.

For balcony railing or other installations, the device must be installed at a location that ensures no one is able to pass or stand directly in front of the device, and in the line of sight between the device and the 5G base station.

Safety Warnings

Adapter

Do not use any other power adapter except the one that accompanies this unit or a power adapter identified in the list below. Use of another adapter could result in damage to the unit.

The following power adapter is qualified for use with this Verizon Receiver:

This unit must be powered by Delta Electronics, model ADH-65BR H or equivalent UL listed power adapter rated @ output 56Vdc, Maximum 1.161A.

Caution

Ensure to connect the power cord of the power adapter to a socket outlet with an earthing connection.

This device complies with Part 15 of the FCC Rules. Operation is subject to the following two conditions: (1) this device may not cause harmful interference, and (2) this device must accept any interference received, including interference that may cause undesired operation.

Table of Contents

1	Chapter 1: Introduction.....	6
1.1	Unboxing Information/Product Package.....	6
1.2	Product Overview	7
1.3	LED and Audio Behavior.....	8
2	Chapter 2: Self-Setup and Activation	9
2.1	App Download	9
2.2	Device Installation via App.....	9
2.3	Preparing for Indoor Installation	10
2.4	Indoor Installation (Glass Window Mounting)	13
2.5	Cable Management (Glass Window Mounting).....	18
2.6	Indoor Installation (Wall Mounting).....	19
2.7	Switching from Indoor Mode to Outdoor Mode.....	22
2.8	Outdoor Installation (Pole/Rail Mounting)	23
2.9	Outdoor Installation (Wall Mounting)	27
2.10	Reset Button.....	31
3	Chapter 3: Product Specifications	32

1 Chapter 1: Introduction

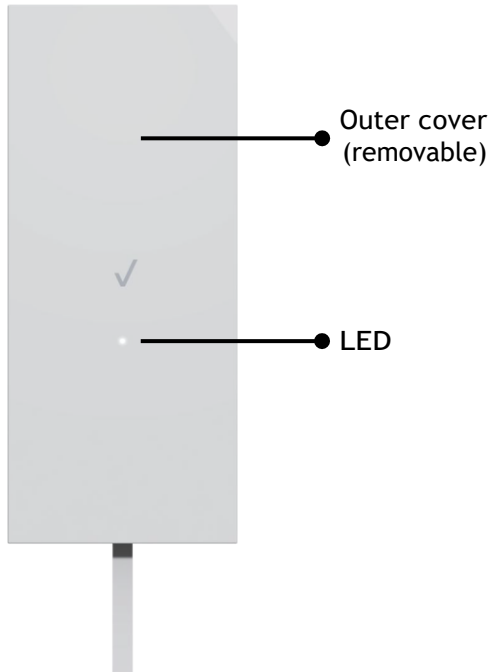
1.1 Unboxing Information/Product Package

Inside the product package for the Verizon Receiver, you should find the following items:

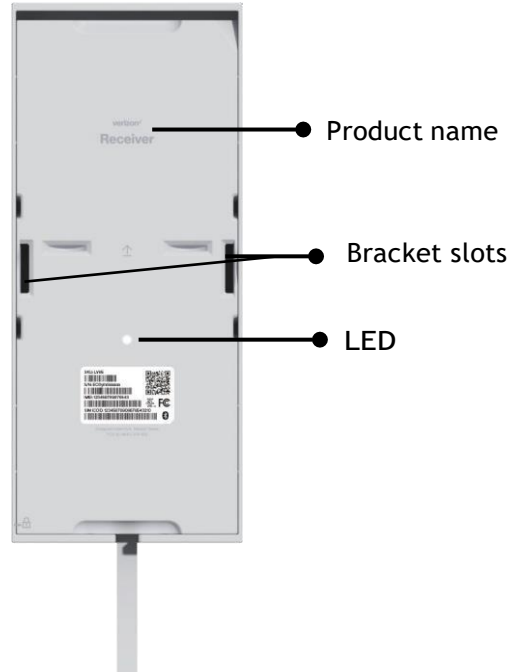
Items	Quantity
Verizon Receiver (with 15 ft. flat Ethernet cable)	1
Power adapter	1
10 ft. Ethernet cable	1
Railing ties	4
Indoor bracket	1
Siding wedges	2
Pole adapter	1
Outdoor bracket	1
Cable adapter	1
Screws & anchors (indoor)	2 of each
Screws & anchors (outdoor)	2 of each
Window wipe	1
Window wedge	1
Cable clips	6
Bracket shims	2
Cable ties	2
Location stickers	3

1.2 Product Overview

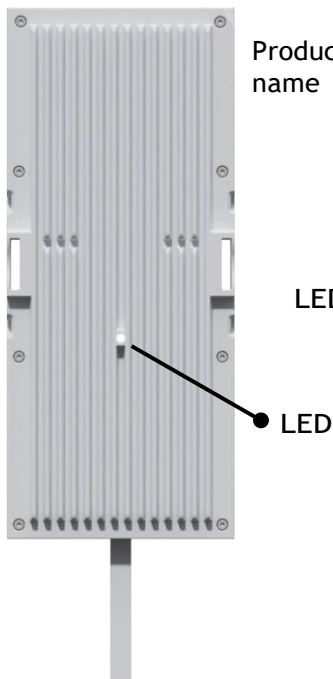
Front side (with cover)



Back side (with cover)



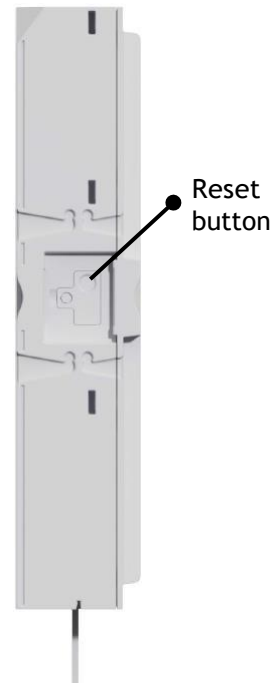
Front side (without cover)



Back side (without cover)



Side view (without cover)



1.3 LED and Audio Behavior

Receiver LED Definition

Mode	Status	LED Pattern
Boot up	--	Blinking white
Unpaired mode	--	Blinking blue
Operation mode	No 5G signal	Solid red
	5G signal confirmed	Solid white
Other	FW error	Blinking red
	FW update	Blinking white

Power adapter LED Definition

Mode	Status	Router LED Pattern	Receiver LED Pattern
AC power connected	The Router LED will turn white only if the AC power cord is connected to a power outlet.	White	--
Receiver connected	The Receiver LED will turn white only if the Receiver is connected to the port.	--	White
No AC power connection	If the power cord is not connected to a power outlet, these two LED will not light up.	Off	Off
No Receiver connection	If the Receiver is not connected or if it's connected to the wrong port, the Receiver LED will not light up.	--	Off

2 Chapter 2: Self-Setup and Activation

2.1 App Download

Please download the My Verizon Mobile app for installation, activation and setup of your Verizon Receiver.

Take out the set up guide print from the gift box.

Scan the QR code to visit the URL on your mobile device or access setup.verizon.com/verizonreceiver

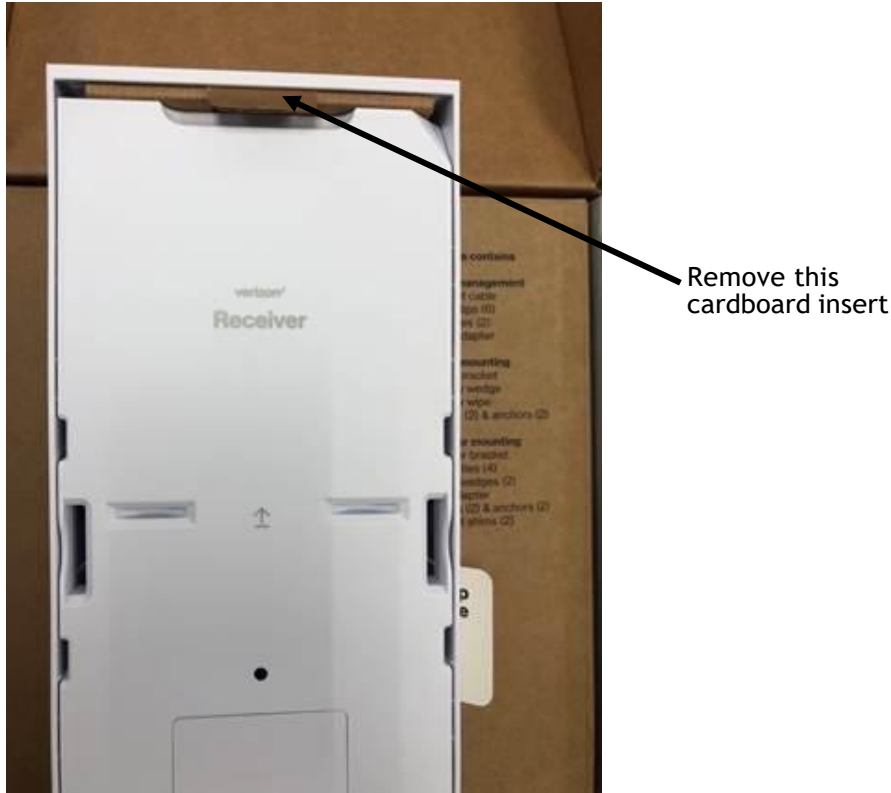


2.2 Device Installation via App

Follow the instructions in the My Verizon Mobile app to conduct self-setup.

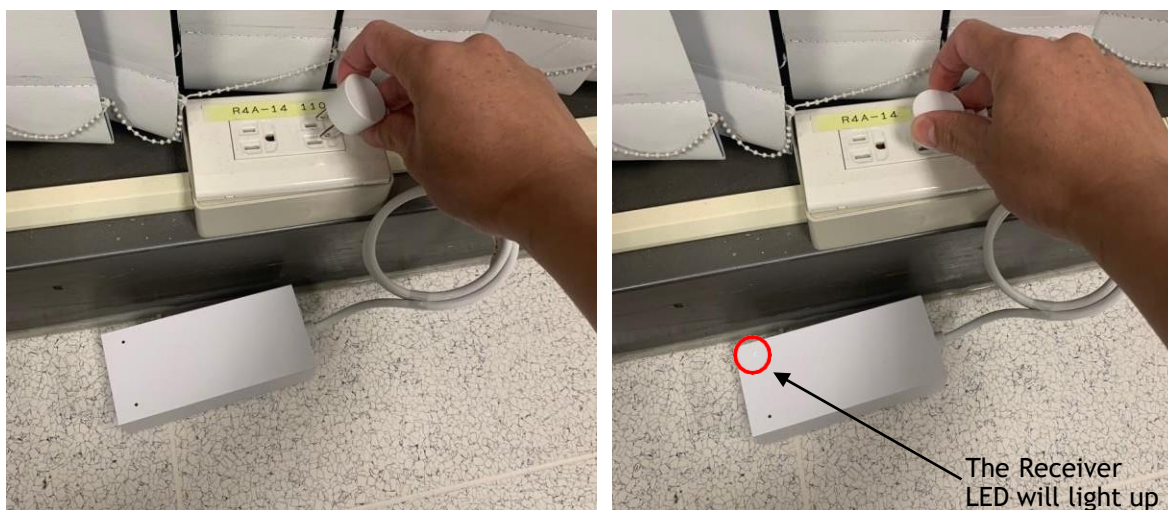
2.3 Preparing for Indoor Installation

Note: Before installing the Verizon Receiver, make sure to remove the cardboard insert between the device and the cover (refer to image below).



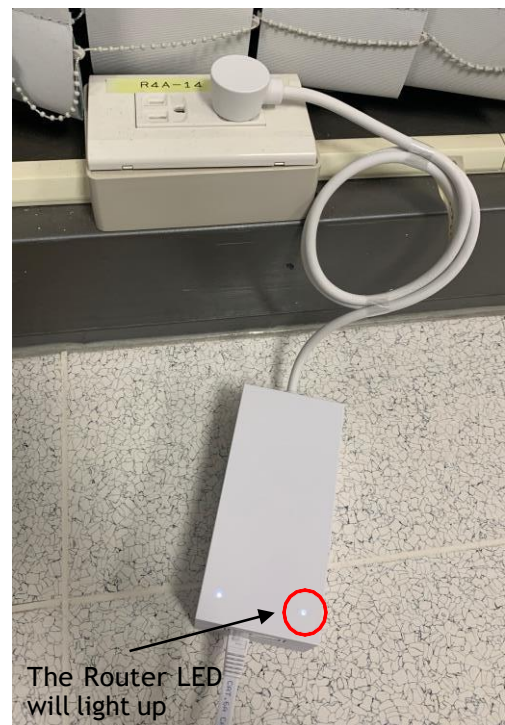
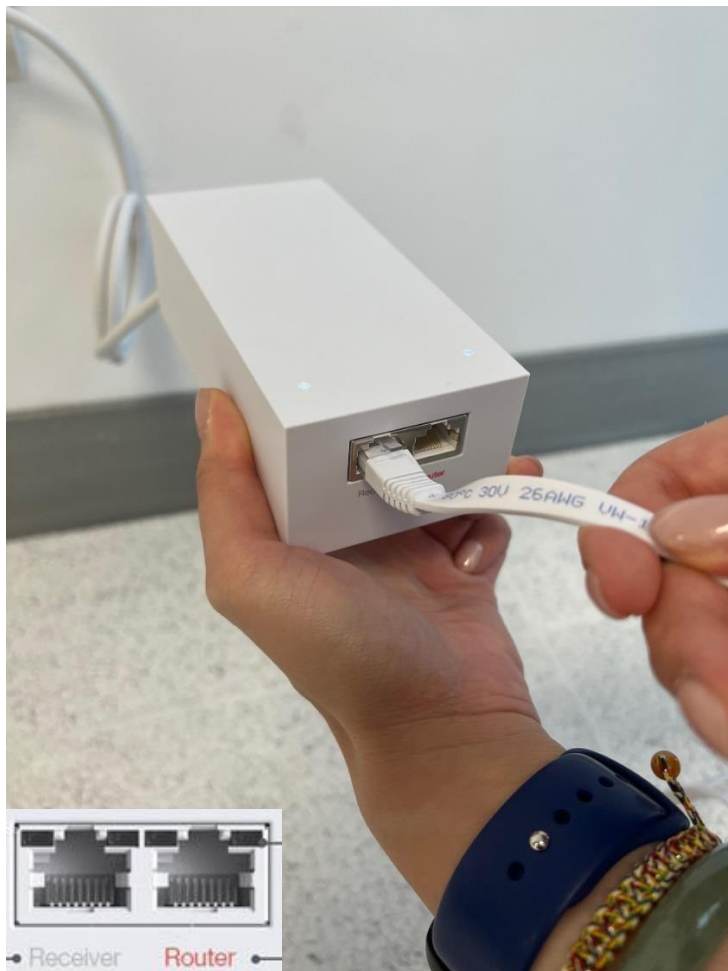
Step 1. Plugging in the power adapter

Plug the power adapter into an electrical outlet. The Receiver LED will turn white.

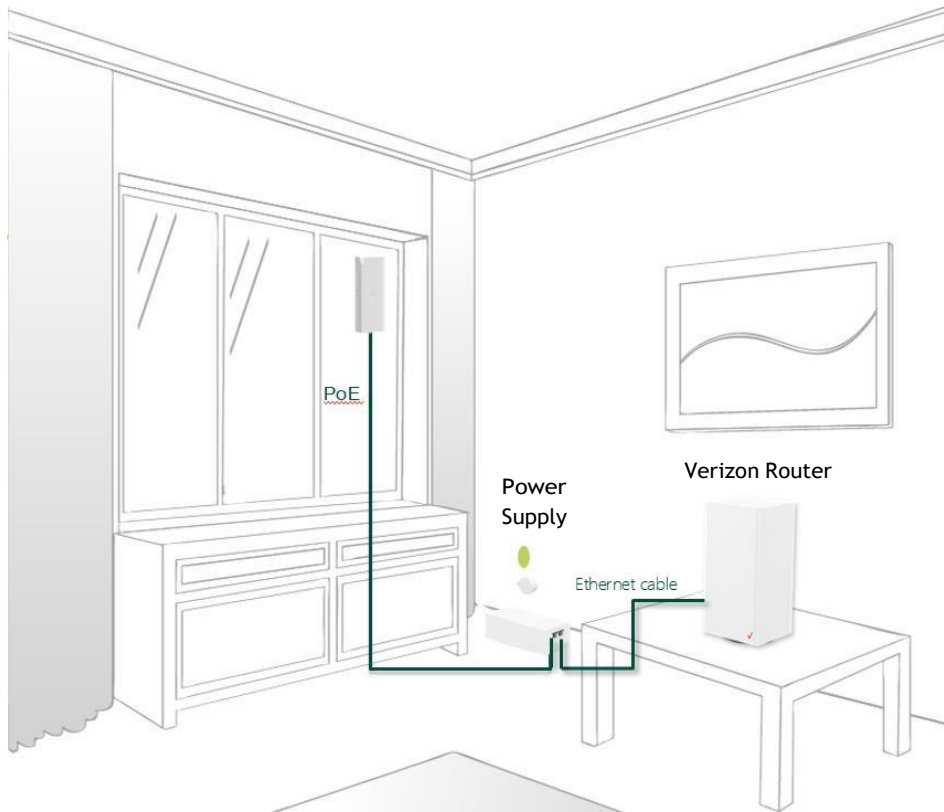


Step 2. Connect the device's Ethernet cable to the power adapter

Plug the Ethernet cable of the Verizon Receiver to the **Receiver** port of the power adapter and wait for the device to boot up. The Receiver LED indicator will light up while the Receiver is booting up. Afterwards, plug an Ethernet cable into the **Router** port of the power adapter, then plug the other end to the WAN port of your router.



Once everything is connected, the completed setup should look like the image below.



2.4 Indoor Installation (Glass Window Mounting)



Step 1. Signal scanning

Hold the Verizon Receiver close to the window to perform signal scanning. Once a location with good signal strength is found, the LED on the device will turn solid white. Affix a location sticker to the spot on the window glass where the device will be mounted (the location stickers can be found on the side of the device's cover).



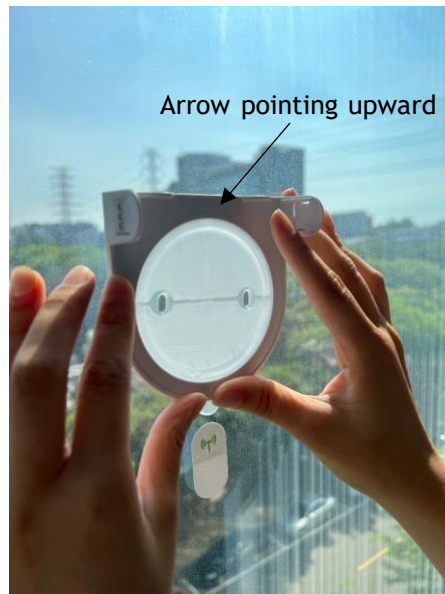
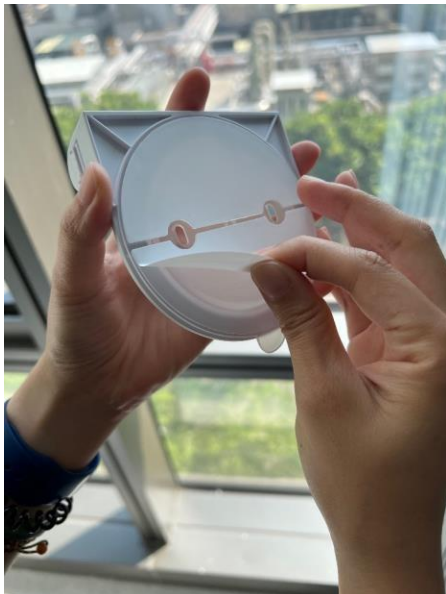
Proprietary & Confidential Statement: This document and the information disclosed within, including the document structure and contents, are confidential and the proprietary property of Verizon and are protected by patent, copyright and other proprietary rights. Any disclosure to a third party in whole or in part in any manner is expressly prohibited without the prior written permission of Verizon.

Step 2. Clean the mounting locations

Clean the mounting location with the included alcohol wipes. Wait for the alcohol to dry before proceeding to the next step.

**Step 3. Affix bracket on window**

Peel off the protective backing from the Gecko tape on the indoor bracket, and then affix the indoor bracket on the window in the orientation shown below. Make sure the arrow on the bracket is pointing upward.

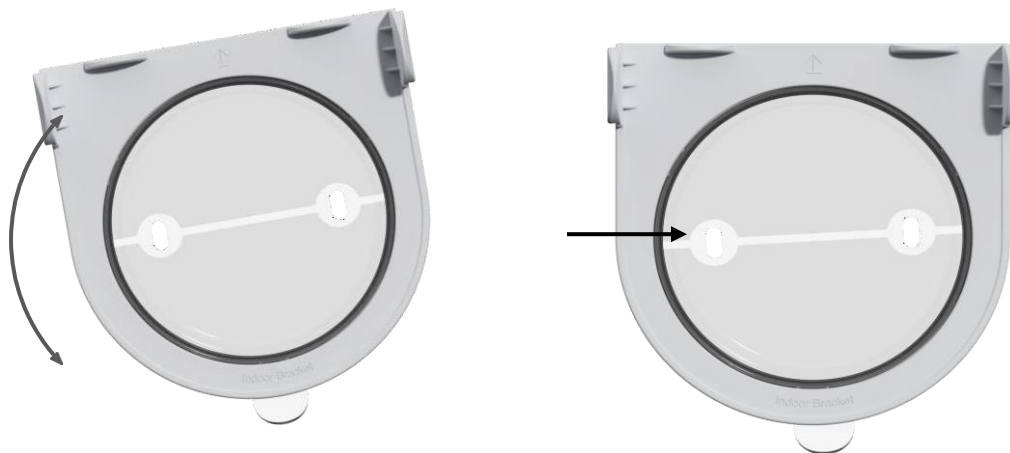


Step 4. Press down on bracket to ensure secure installation

Use both thumbs to apply solid pressure in all areas where Gecko tape makes contact with the glass to ensure a secure installation. Whenever possible, check the adhesion by looking at the bracket from the outside in.



Note: If after installation the bracket is not horizontal, you can use the Lazy Susan feature to adjust the orientation of the bracket.



Step 5. Place device onto bracket

Once the indoor bracket is securely affixed to the window, align the bracket slots on the device with the bracket arms on the bracket, then push the device into the bracket until a “click” sound is heard.



Step 6. Finish installation

Adjust the orientation of the Verizon Receiver until its top and sides are perfectly horizontal or vertical.

Refer to the image on the bottom right for the correct orientation.



Notes on window installation:

Window installation		
Ensure glass is smooth and that no thermal paper is affixed.	Avoid installing in windows located above objects that could be easily damaged. Keep the area below the window clear.	Avoid installing in windows that may change shape.
Avoid installing in movable windows, unstable windows, or any windows subject to high wind gusts.		

2.5 Cable Management (Glass Window Mounting)

Attach a cable clip to a location of your preference on the window, then press the device's Ethernet cable into the cable clip (6 cable clips are provided in the package).



You can also install window wedges (included in package) to prevent sliding windows from colliding with the device.



2.6 Indoor Installation (Wall Mounting)



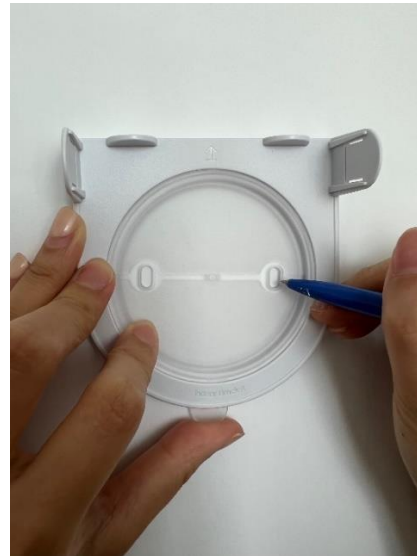
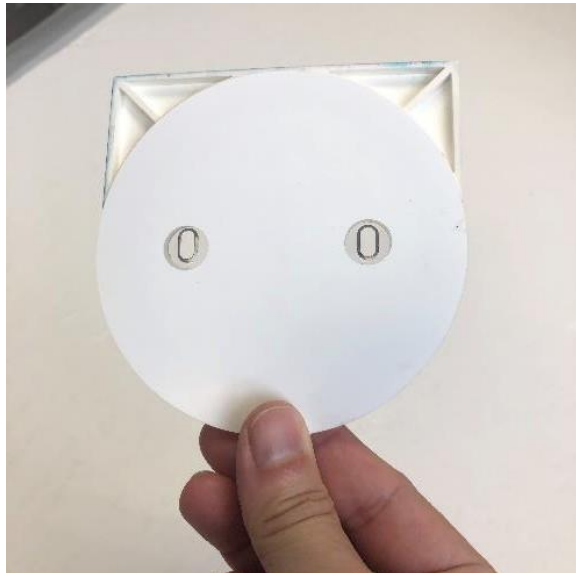
Step 1. Signal scanning

Hold the Verizon Receiver near different locations on the wall to perform signal scanning (hold the device at a height above your head when doing so). Once a location with good signal strength is found, the LED on the device will turn solid white. Affix a location sticker to the spot.

Step 2. Mark the screw locations

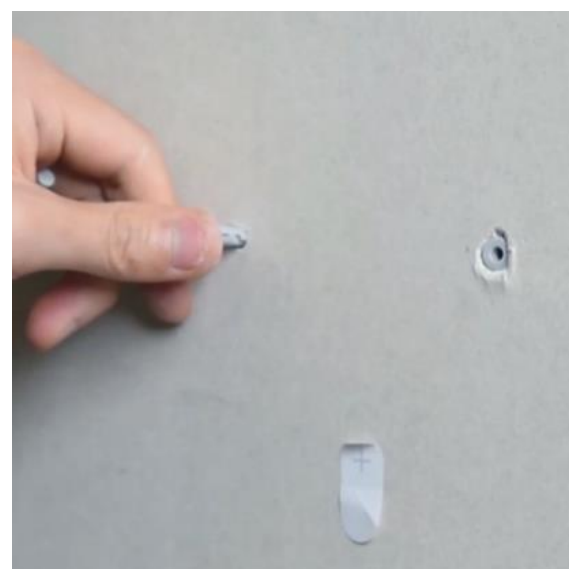
Place the indoor bracket on the location on the wall where you want to install the device, then use a pen to mark the locations where the screws will be drilled into the wall (as indicated in the right image below).

Note: **DO NOT** peel off the protective backing when installing the bracket on a wall.



Step 3. Drill installation holes and install the bracket

Use a drill to drill 1/4 inch holes in the marked locations, then take two wall anchors from the indoor wall screw pack and place them into the holes (make sure the tops of the anchors are flush with the wall).



Step 4. Install bracket

Align the holes on the indoor bracket with the wall anchors, then take two screws from the indoor wall screw pack and screw them into the wall anchors.

**Step 5. Install the device onto the bracket**

After installing the bracket, place the device onto the bracket (refer to step 5 of the glass window mounting process) and conduct cable management as needed.

2.7 Switching from Indoor Mode to Outdoor Mode

1. The cover of the device can be removed and swapped to the opposite side for outdoor mounting.



2. Lightly push the device upward to disengage the cover lock.



3. Once the lock is disengaged, pull the cover off.



4. Flip the device 180 degrees so the side with the product label is facing toward the cover.



5. Place the device back into the cover.



6. Lightly push the cover upward to engage the cover lock.



Proprietary & Confidential Statement: This document and the information disclosed within, including the document structure and contents, are confidential and the proprietary property of Verizon and are protected by patent, copyright and other proprietary rights. Any disclosure to a third party in whole or in part in any manner is expressly prohibited without the prior written permission of Verizon.

2.8 Outdoor Installation (Pole/Rail Mounting)



Step 1. Signal scanning

Hold the Verizon Receiver next to different locations on the pole/rail to perform signal scanning (hold the device at a height above your head when doing so). Once a location with good signal strength is found, the LED on the device will turn solid white. Affix a location sticker to the spot.

Note: When installed in an outdoor location, the device must be installed at a height above your head to prevent people from standing directly in front of the device and in the line of sight between the device and the 5G base station.

Step 2. Run railing ties through bracket

Run two railing ties through the outdoor bracket in the manner as indicated in the two images below.

Note 1: Use different slots for installation on a vertical or horizontal rail. Choose the slots closer or further from the center depending on the diameter of the rail.

Note 2: When installing the bracket on a round pole, attach a pole adapter onto the bracket.



Note: the railing ties are in the bottom layer of the package (refer to the images below for the location of the railing ties).



Proprietary & Confidential Statement: This document and the information disclosed within, including the document structure and contents, are confidential and the proprietary property of Verizon and are protected by patent, copyright and other proprietary rights. Any disclosure to a third party in whole or in part in any manner is expressly prohibited without the prior written permission of Verizon.

Step 3. Install bracket onto pole/rail

Install the outside bracket to a pole/rail as indicated in the images below.

Note: The bracket may only be installed on round poles 0.8 to 3 inches in diameter, or squared rails 1 to 2.7 inches in width.

Round pole



Squared rail



Step 4. Remove the cover from the device (refer to the first three steps in section 2.7)

Step 5. Install device onto the bracket

Align the bracket slots on the device with the bracket arms on the outdoor bracket, then push the device into the bracket until a “click” sound is heard.

Note: Hold the device’s Ethernet cable when installing it onto the outdoor bracket to prevent the device from accidentally falling.



Step 6. Install outdoor bracket shims

Insert the bracket shims as indicated in image A below to prevent the device from sliding out of the bracket, then place the cover back onto the device. Insert the cover and slide it up to lock it (refer to image B below) and conduct cable management as needed.

(A)



(B)



2.9 Outdoor Installation (Wall Mounting)



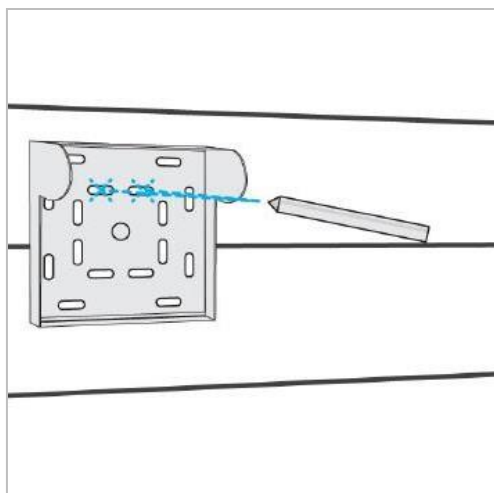
Step 1. Signal scanning

Hold the Verizon Receiver next to different locations on the wall to perform signal scanning (hold the device at a height above your head when doing so). Once a location with good signal strength is found, the LED on the device will turn solid white. Affix a location sticker to the spot.

Note: When installed in an outdoor location, the device must be installed at a height above your head to prevent people from standing directly in front of the device and in the line of sight between the device and the 5G base station.

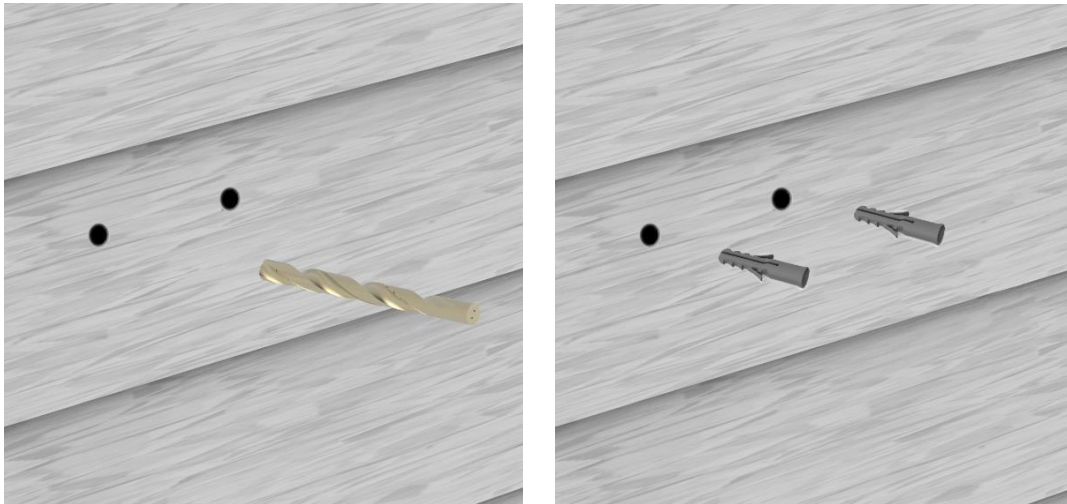
Step 2. Mark the screw locations

Place the outdoor bracket on the location on the wall where you want to install the device, then use a marker to mark the locations where the screws will be drilled into the wall.



Proprietary & Confidential Statement: This document and the information disclosed within, including the document structure and contents, are confidential and the proprietary property of Verizon and are protected by patent, copyright and other proprietary rights. Any disclosure to a third party in whole or in part in any manner is expressly prohibited without the prior written permission of Verizon.

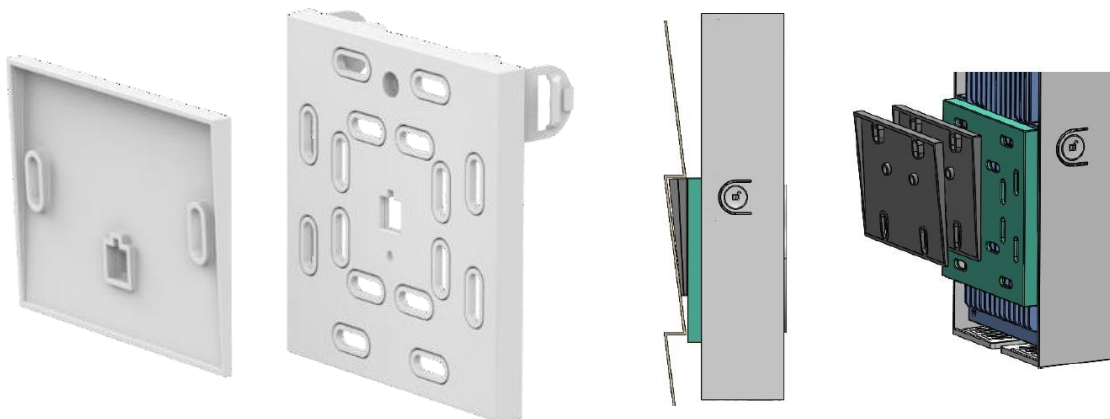
Step 3. Drill installation holes



Use a drill to drill 1/4 inch holes in the marked locations, then take two wall anchors from the outdoor wall screw pack and place them into the holes (make sure the tops of the anchors are flush with the wall).

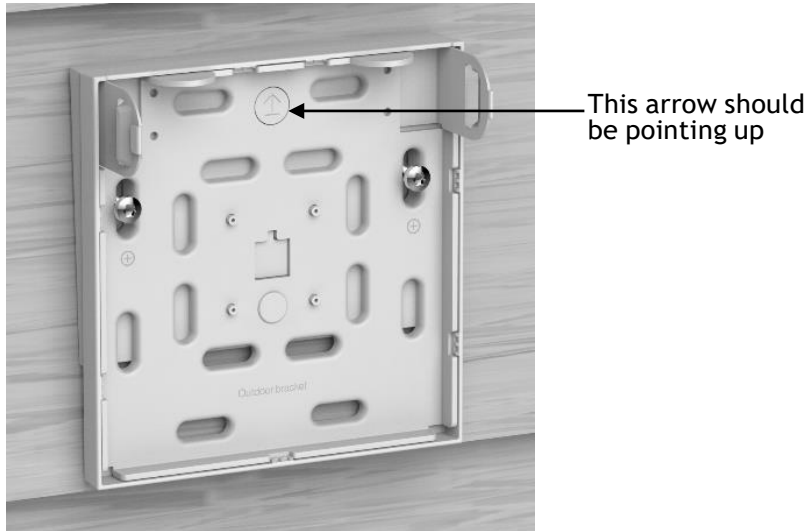
Step 4. Install siding wedge(s) onto bracket

Install one or two siding wedges onto the bracket (depending on the profile of the wall siding) to ensure that the device is aligned vertically after it is placed onto the bracket. To install a wedge, align the middle raised portion on the wedge with the corresponding slot on the bracket, then push the wedge into the bracket until a secure fit is achieved.



Step 5. Install bracket

Align the holes on the outdoor bracket with the wall anchors, then take two screws from the outdoor wall screw pack and screw them into the wall anchors.



Step 6. Remove the cover from the device (refer to the first three steps in section 2.7)

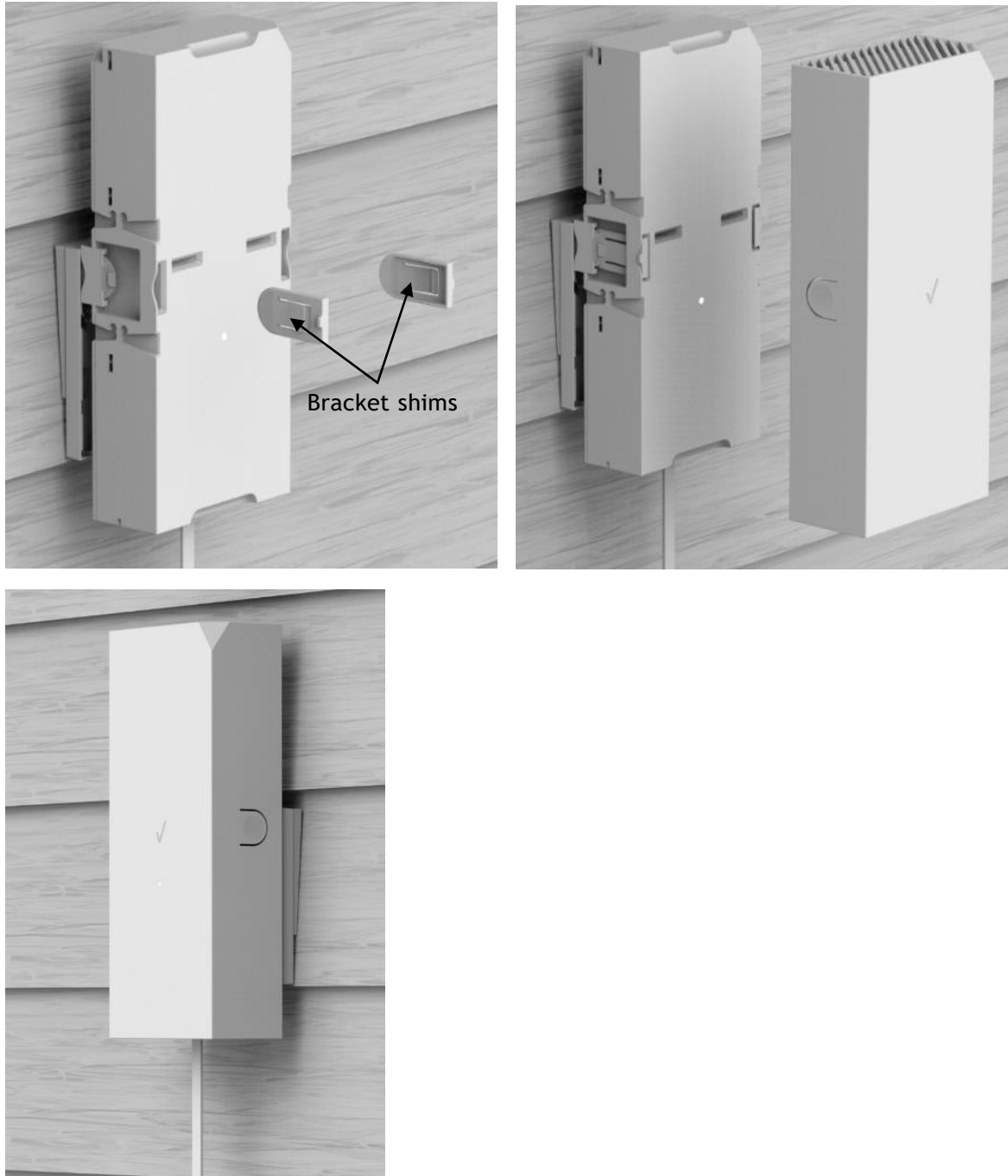
Step 7. Install device onto the bracket

Align the bracket slots on the device with the bracket arms on the outdoor bracket, then push the device into the bracket until a “click” sound is heard.



Step 8. Install outdoor bracket shims

Insert the outdoor bracket shims as indicated in the left image below to prevent the device from sliding out of the bracket, then place the cover back onto the device. Insert the cover and slide it up to lock it, and conduct cable management as needed.



2.10 Reset Button

The functions of the device's reset button are as follows:

Button press duration	Function
Long press (1-5 seconds)	Switch between installation mode and regular usage mode
Long press (> 10 seconds)	Restores device to factory settings

3 Chapter 3: Product Specifications

Bands	<ul style="list-style-type: none"> · 5G mmWave: n261 / n260 · 5G Sub-6: n2, n5, n48, n66, n77 · 4G: B2, B5, B13, B48, B66
Memory	· 1 GB LPDDR4 + 1 GB NAND
Dimensions	· 9.84 × 4.19 × 2.08 inches (with cosmetic cover)
Weight	· 2.83 lb.
Connector Type	· RJ45 (5 Gbps) × 1
Operating Temperature	<ul style="list-style-type: none"> · -22 °F to 131 °F (Outdoor) · 32 °F to 104 °F (Indoor)