

## Configuring Windows When Adding Computers to your Network

When you configured the computer attached to your router, you saved your Windows home networking information to a flash drive or to a removable media like a floppy disc. This step uses this saved information to configure the computers you're connecting to your home network.

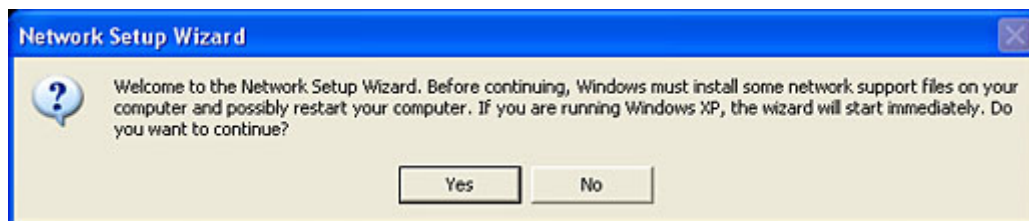
**Note:** If you are connecting computers running Windows 98 SE or Windows Me to your home network, you must use the flash drive or removable media to start the Network Setup Wizard.

### To configure Windows for home networking:

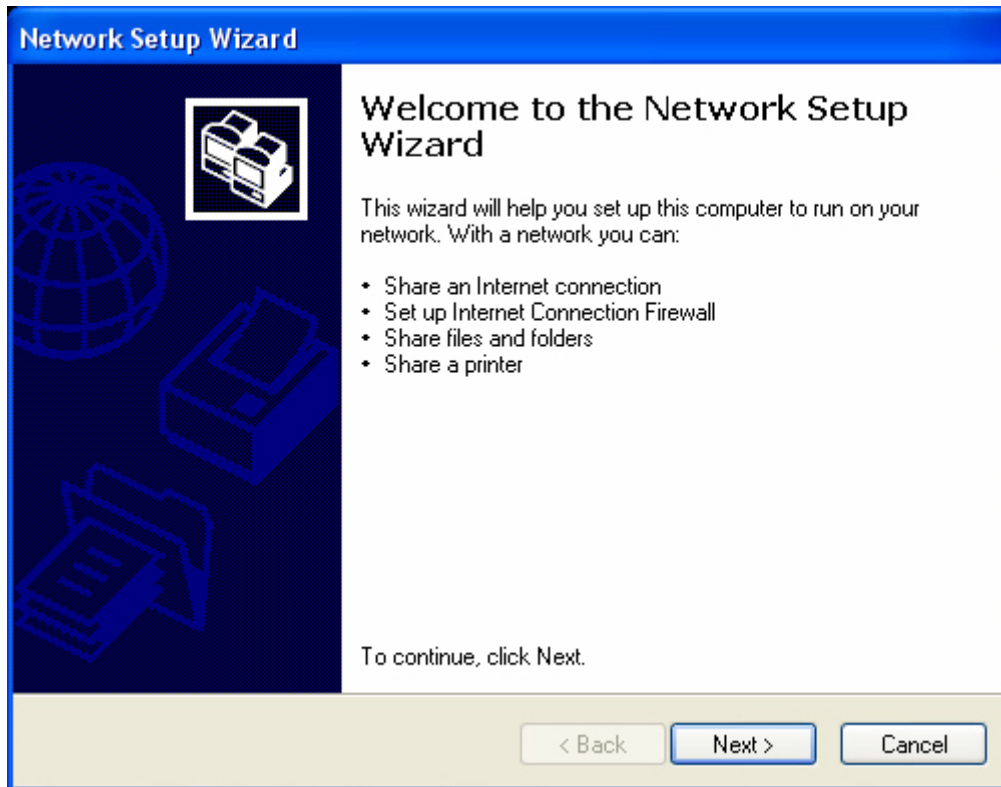
1. Insert the removable media into the appropriate type of drive on your computer. If you saved the information to a flash drive, insert the flash drive into an available USB port.

**Note:** If your computer is running Windows XP, you can [access the Network Setup Wizard](#) without using the removable media saved from connecting your first computer to the network.

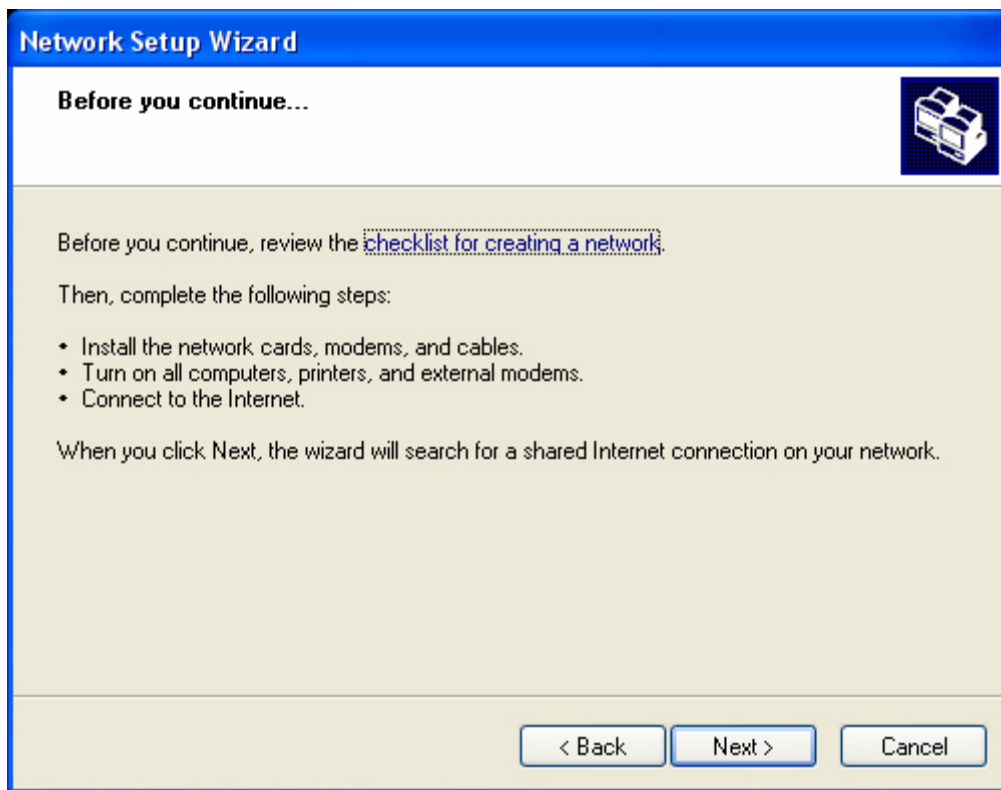
2. Double-click on the **My Computer** icon on your desktop.
3. Navigate to the drive containing the removable media (floppy disk, flash drive, etc.).
4. Double-click on the icon or drive letter of the drive holding the removable media.
5. Double-click on the **netsetup.exe** file. The Network Setup Wizard will start automatically.
6. Click **Yes** if a dialog box displays informing you that some network support files may need to be installed.



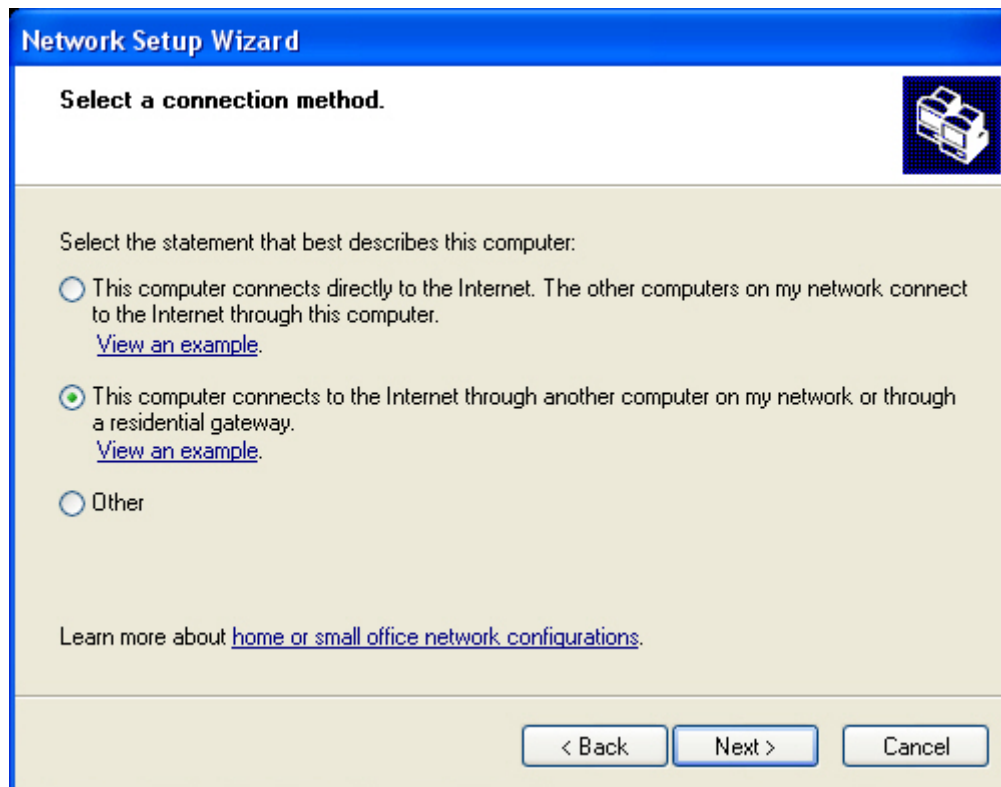
7. Click **Next** when the Welcome to the Network Setup Wizard screen displays.



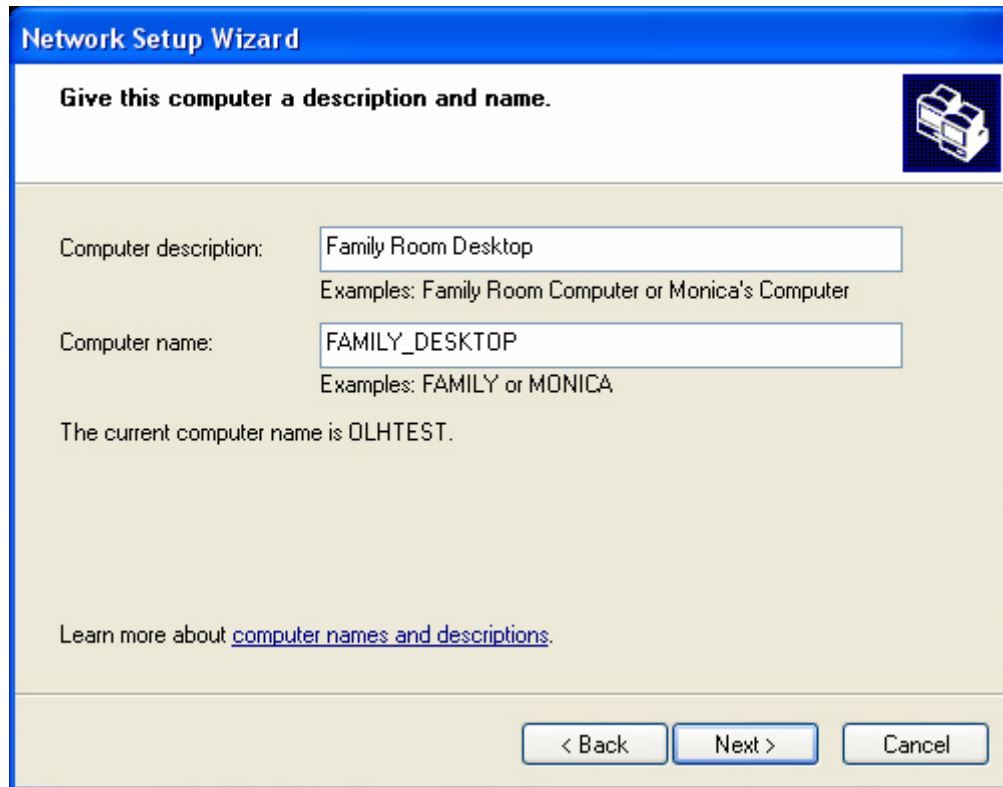
8. Click **Next** when the "Before you continue" screen displays.



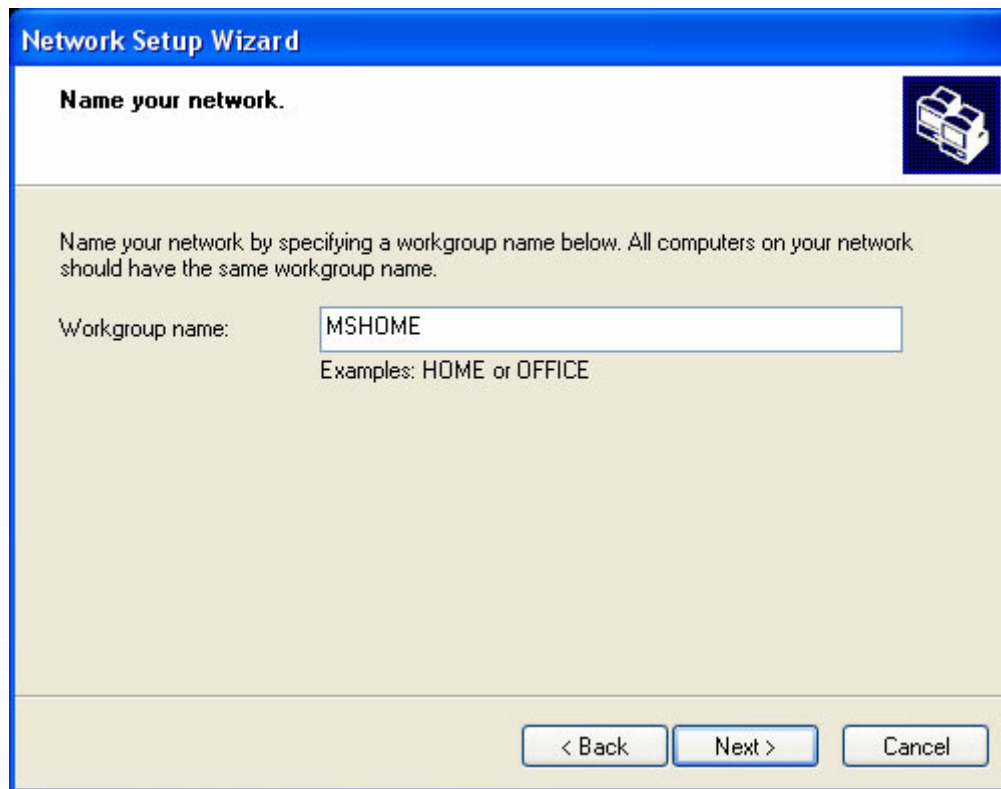
9. Select **This computer connects to the Internet through another computer on my network or through a residential gateway** in the "Select a connect method" screen.



10. Enter a description for this computer in the **Computer description** field. It should differentiate it from the other computers on your network.

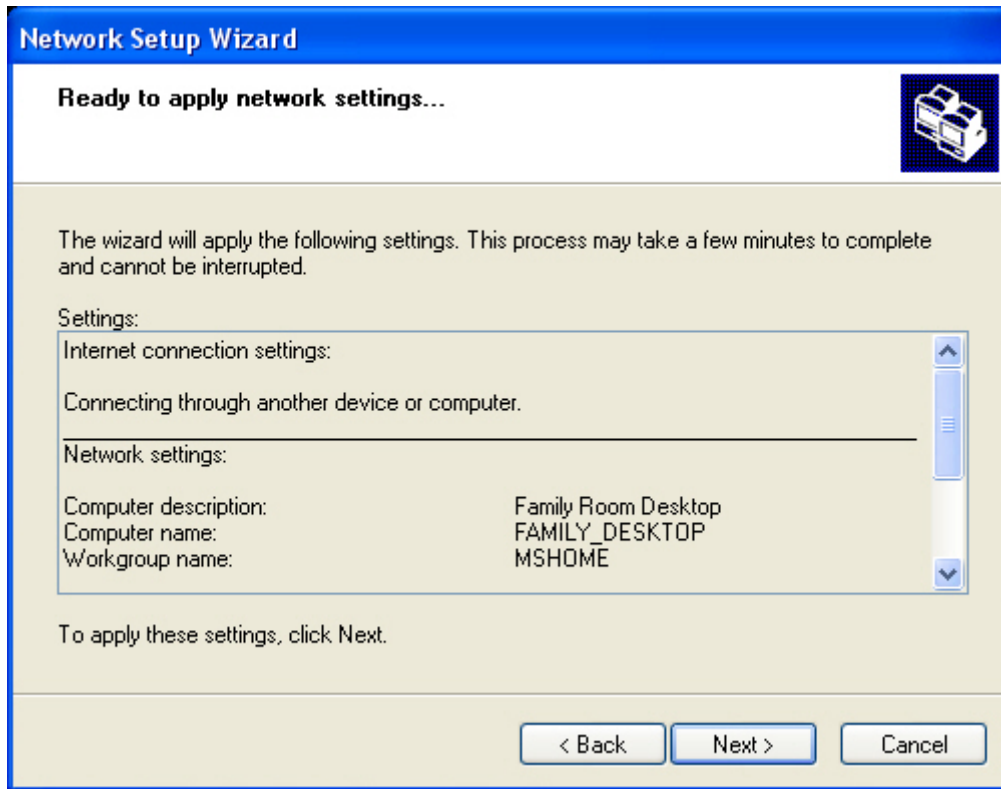


11. Enter a descriptive name in the **Computer name** field for this computer. This is how it will be listed on your network.
12. Enter the workgroup name for this computer. All the network computers must belong to the same workgroup.

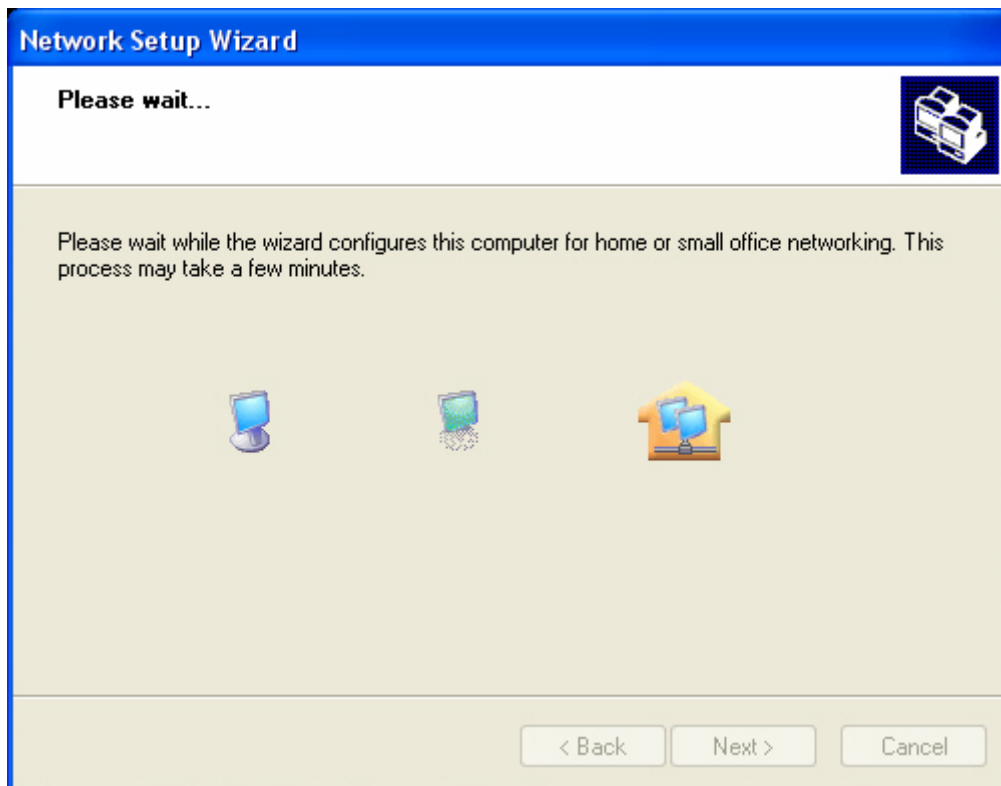


13. Review your settings to make sure they are correct.

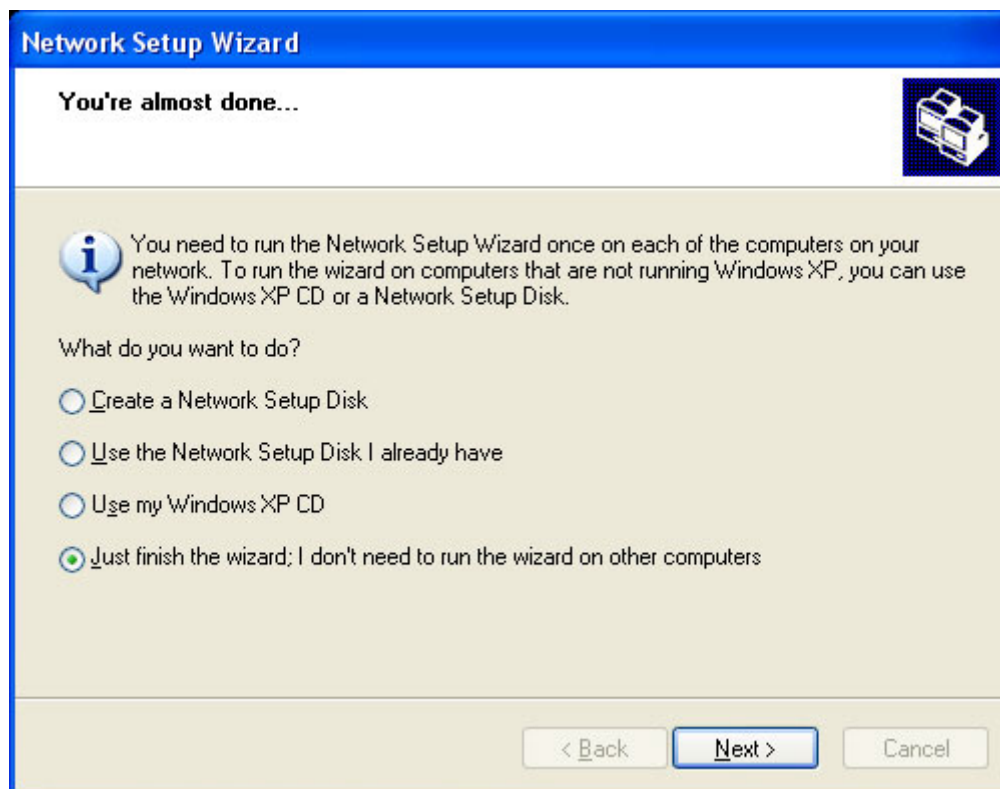
- If they are correct, click **Next**.
- Click **Back** to make any necessary changes.



14. Your computer will automatically be configured for your home network.



15. Select **Just finish the wizard; I don't need to run the wizard on other computers**. You will use the same flash drive or removable media that you used on this computer to configure the remaining network computers. You don't need to create another setup disk.



16. Click **Next**.
17. Click **Finish** when the "Completing the Network Setup Wizard" screen displays.

