

After you're done

Please bring all equipment you wish to return along with your order number to the nearest qualified Verizon Fios return location or any of The UPS Store locations.

These locations will package, box and process your equipment return free of charge.

Please do so within 30 days to avoid unreturned equipment charges of up to \$375 per item.

If you need help finding a qualified location, visit [verizon.com/home/storelocator](https://www.verizon.com/home/storelocator)

FPO clear space
for FSC logo



11364767

WHS 4100 DIGITAL GUIDE
12-22

Fios TV One setup instructions



Before you begin.

Use the My Fios app for easy setup instructions.
Data usage applies for QR code download/use.

Visit [verizon.com/installmyfios](https://www.verizon.com/installmyfios) or download
the My Fios app for setup help.



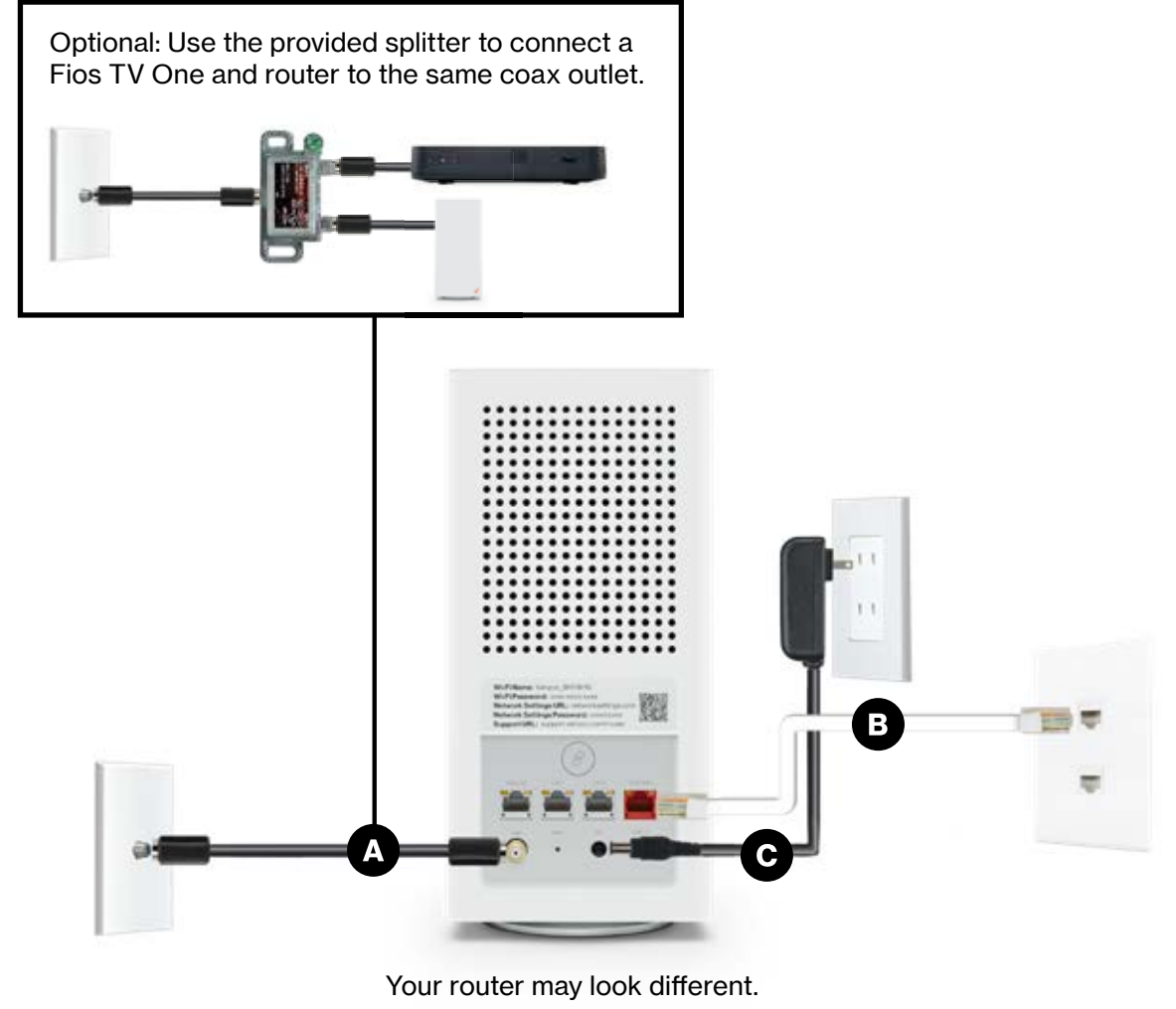
Step 1: Router

Your router must be set up first. You must have an internet connection. If you already have a router, make sure it's set up correctly and move on to step 2.

Set up your router:

- A. Connect the coax cable from the coax port on your router to a coax outlet. (Required for Fios TV*)
- B. Connect the Ethernet cable from the WAN port on your router to an Ethernet outlet.
- C. Connect the power cord to your router then to an electrical outlet.
- D. Router will take up to 10 minutes to update completely if no software updates are required. Additional time may be needed and your router may reboot multiple times during install. Move to the next step when the front light is solid white.

Then, connect your devices to your Wi-Fi using the Wi-Fi name and password found on your router's label.



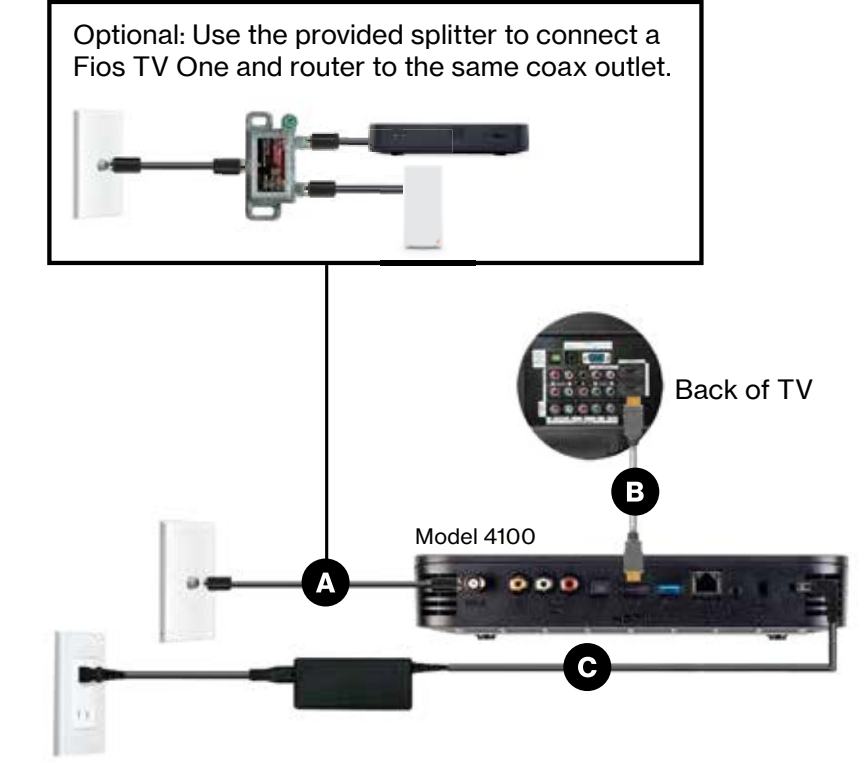
*Separate subscription required; not available in all areas.

Step 2: Fios TV One

Set up your Fios TV One(s):

- A. Connect the coax cable.
- B. Connect the provided HDMI cable.*
- C. Connect the power cord.

Once set up, follow the instructions on your TV screen to activate and sync to the Fios network.



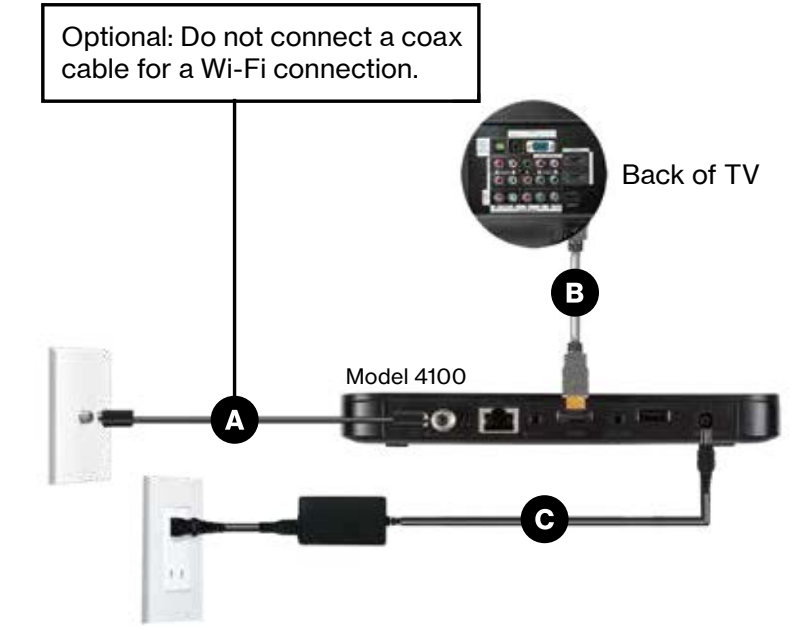
*The HDMI cables included with your equipment are 4K compatible.

Step 3: Fios TV One Mini

Set up your Fios TV One Mini(s):

- A. Choose a wired (preferred) or Wi-Fi connection.
 - Wired: Connect the coax cable.
 - Wi-Fi: Skip this step and move on to B.
- B. Connect the provided HDMI cable.*
- C. Connect the power cord.

Once set up, follow the instructions on your TV screen to activate and sync to the Fios network.



*The HDMI cables included with your equipment are 4K compatible.