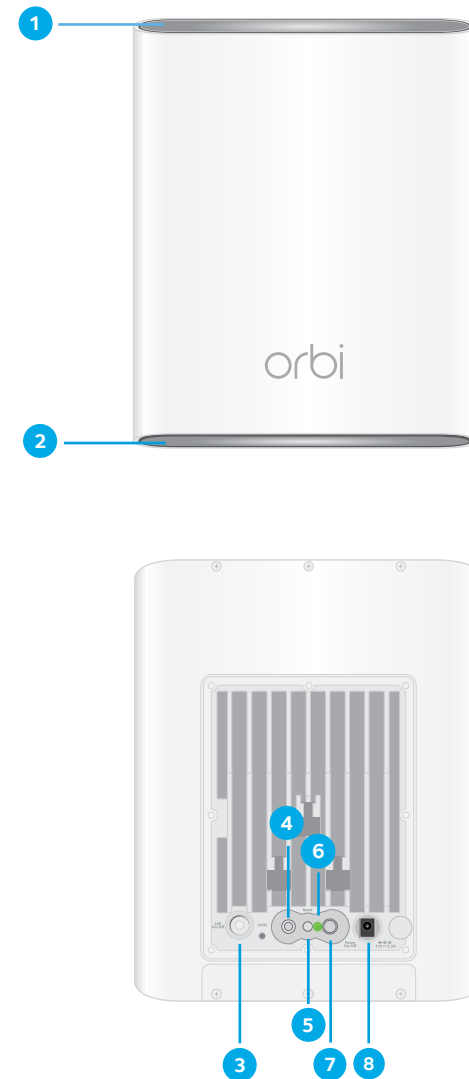




## Quick Start Guide

### Orbi Outdoor Satellite Overview



- 1 Top Light LED
- 2 Bottom Light LED
- 3 LED On/Off button
- 4 Sync button (also used for WPS connection)
- 5 Reset button
- 6 Power LED
- 7 Power On/Off button
- 8 Power connector

### Manually Sync Your Orbi Outdoor Satellite With Your Orbi Router

Place your Orbi router and satellite near each other during the syncing process. After your router and satellite are synced, place your satellite outdoors.

1. Place your satellite in an area near your Orbi router.
2. Connect your satellite to a power source.  
The Power LED on the back of the Orbi lights. If the Power LED does not light, press the **Power On/Off** button.
3. Wait for the bottom Light LED to light white.  
The following is the LED behavior during booting:
  - **Pulsing white.** The satellite is booting.
  - **Solid white.** The satellite finished booting and is ready to sync with your router.
4. Press the **Sync** button on the back of your satellite, and within two minutes, press the **Sync** button on the back of your Orbi router.
5. Wait for the satellite to sync with the router.  
The bottom Light LED on the satellite lights white while it attempts to sync with your Orbi router. It might take about six minutes for your satellite to sync.

After the bottom Light LED lights white, it lights one of the following colors for about three minutes and then turns off:

- **Blue**  
The Orbi router and satellite successfully synced, and the connection between the router and satellite is good.
- **Amber**  
The Orbi router and satellite successfully synced, and the connection between the router and satellite is fair. Consider moving the satellite closer to the router.
- **Magenta**  
The Orbi router and satellite failed to sync. Move the satellite closer to the router and try again.

6. Move your satellite outdoors and connect it to a power source.

**Note:** The recommend temperature range for your satellite is 4°F to 122°F (-20°C to +50°C).

7. Make sure that the bottom Light LED lights blue to indicate a good connection to the router.

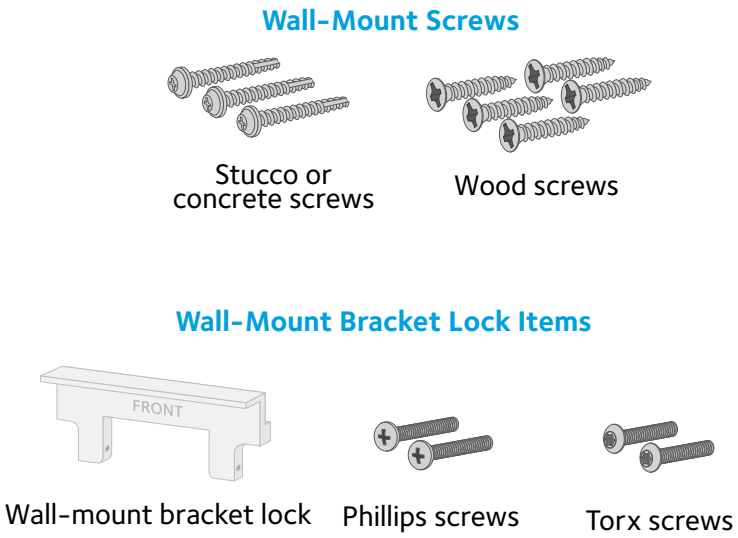
8. (Optional) Mount your satellite.

You can wall-mount your satellite or place it on a stand. For more information, see [Wall-Mount the Satellite](#) or [Attach the Satellite to the Stand](#) on the other side of this quick start guide.

**Note:** After your satellite syncs with your router, the satellite's **Sync** button is disabled for security reasons. If you press the **Sync** button and the satellite's ring LED pulses magenta, this LED behavior indicates that the **Sync** button is disabled. To enable the **Sync** button, log in to the router and go to the Attached Devices page. For more information, see the user manual.

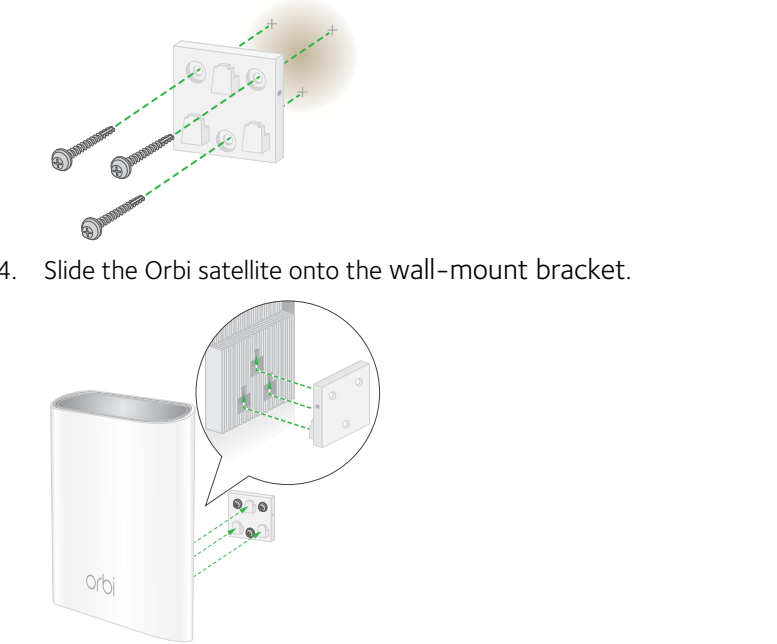


## Package Contents



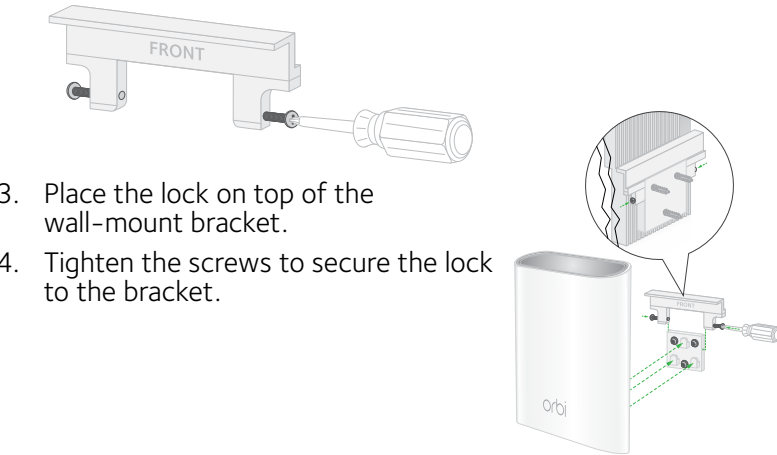
## Wall-Mount the Satellite

1. Use the wall-mount bracket as a template to mark three holes on the wall.
2. Drill holes where you marked on the wall using a 5/32-inch drill bit.
3. Place the wall-mount bracket where you drilled the holes and secure the bracket to the wall using the stucco or concrete screws or the wood screws.



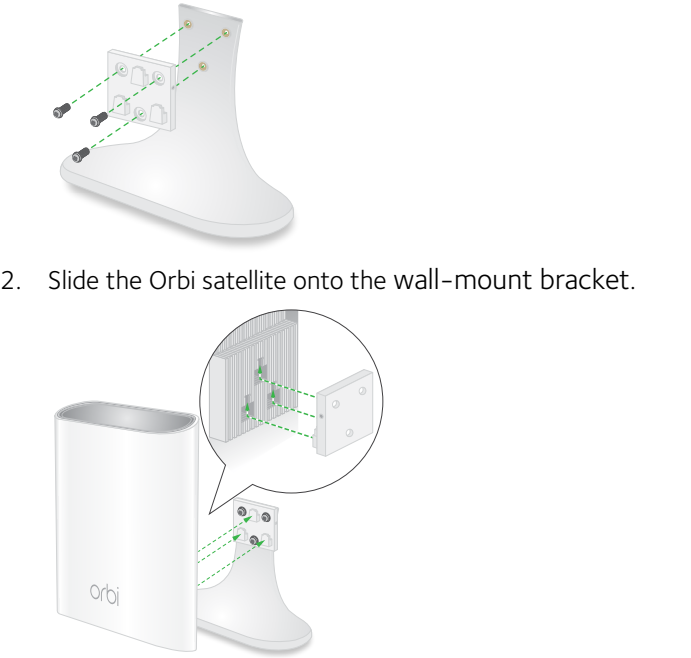
## Lock the Satellite to the Wall-Mount Bracket

1. Follow the instructions in [Wall-Mount the Satellite](#).
2. Insert the Phillips screws or torx screws that came with your package into the wall-mount bracket lock. The screws must be flush with the lock.



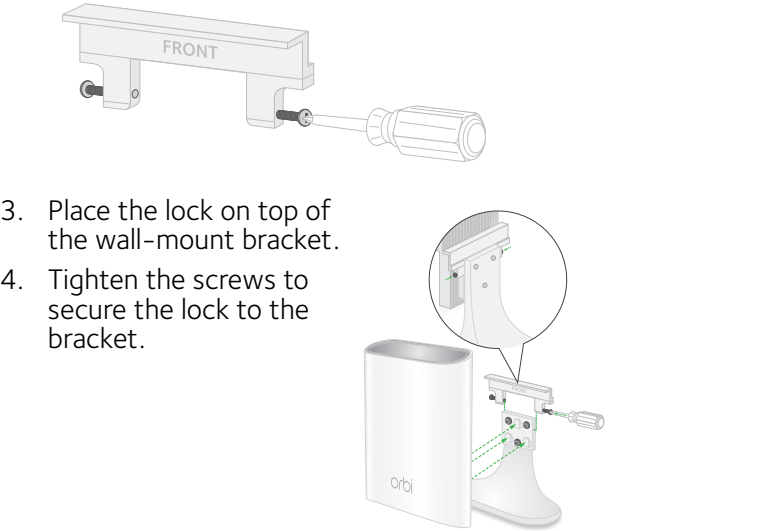
## Attach the Satellite to the Stand

1. Attach the wall-mount bracket to the stand using the machine screws.



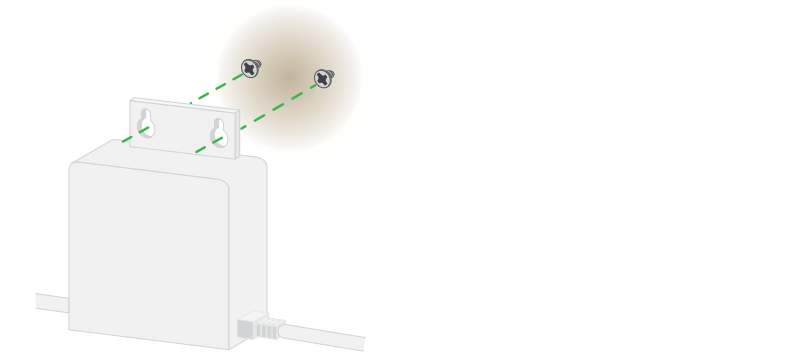
## Lock the Satellite to the Stand

1. Follow the instructions in [Attach the Satellite to the Stand](#).
2. Insert the Phillips screws or torx screws that came with your package into the wall-mount bracket lock. The screws must be flush with the lock.



## Wall-Mount the Power Adapter

To mount the power adapter to the wall, insert two wood screws into the wall (make sure to leave a portion of the screw thread exposed) and place the power adapter over the screws.



## Support

Thank you for purchasing this NETGEAR product. You can visit [www.netgear.com/support](http://www.netgear.com/support) to register your product, get help, access the latest downloads and user manuals, and join our community. We recommend that you use only official NETGEAR support resources.

Si ce produit est vendu au Canada, vous pouvez accéder à ce document en français canadien à <http://downloadcenter.netgear.com/other/>.

(If this product is sold in Canada, you can access this document in Canadian French at <http://downloadcenter.netgear.com/other/>.)

For the current EU Declaration of Conformity, visit <http://kb.netgear.com/11621>.

For regulatory compliance information, visit <http://www.netgear.com/about/regulatory/>.

See the regulatory compliance document before connecting the power supply.

**NETGEAR, Inc.**  
350 East Plumeria Drive  
San Jose, CA 95134, USA

**CE** **NETGEAR INTL LTD**  
Building 3, University Technology Centre  
Curraheen Road, Cork, Ireland

© NETGEAR, Inc., NETGEAR and the NETGEAR Logo are trademarks of NETGEAR, Inc. Any non-NETGEAR trademarks are used for reference purposes only.